

Goverance, Response and Recoverability

Infrastructure Resiliency

Ellis M. Stanley, Sr.,

Managing Partner, *ELLIS STANLEY PARTNERS, LLC.*

Chair, Global Board, International Association of Emergency Managers

What Disaster Resilience Means

- **The ability to prepare and plan for, absorb, recover from, or more successfully adapt to actual or potential adverse events**
- **It's about adapting—**
- **Having vision, focus, follow-through and fortitude—**
- **Embracing the “new normal”**

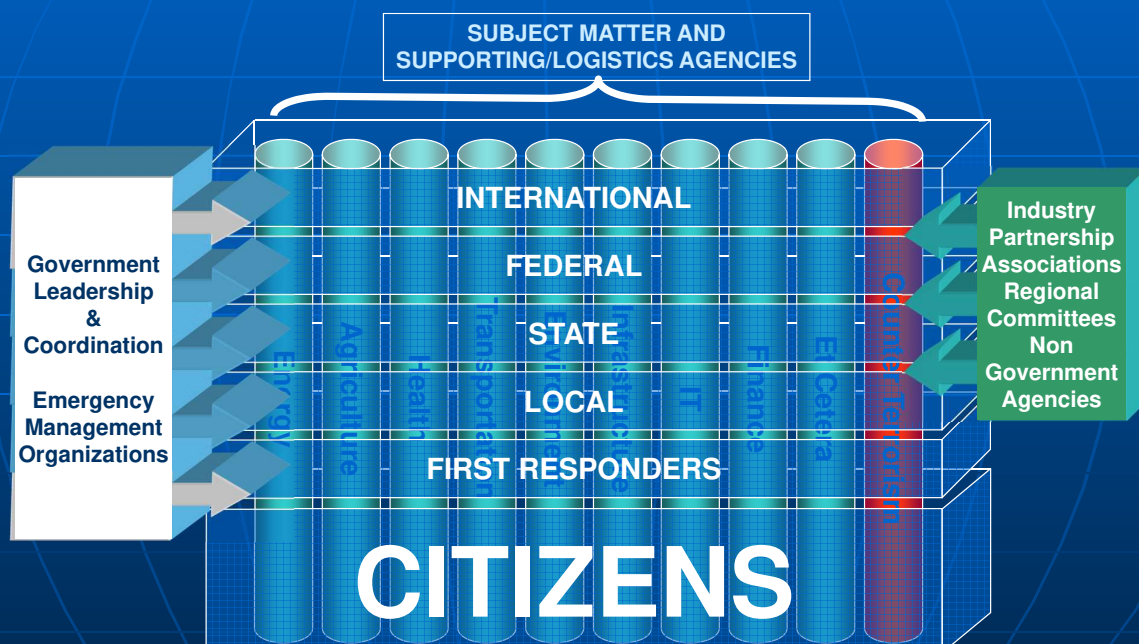
“How to take a licking and keep on ticking”

Understanding, Managing, and Reducing Disaster Risks



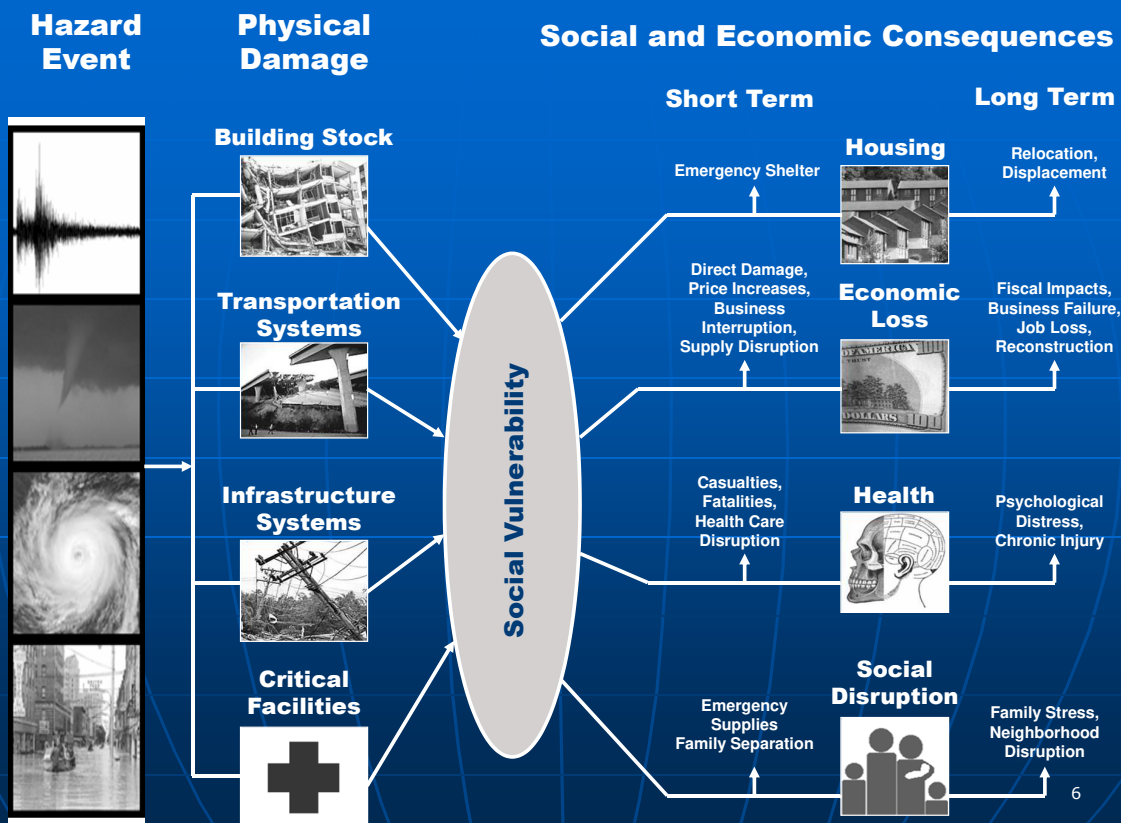
- Risk management involves a range of interacting parties: federal, state, local government; home- and business owners; emergency managers; construction industry; insurers; markets; and others.
- Risk communication is critical in understanding and managing risk.
- A variety of tools and approaches exist to manage disaster risk. These tools are complementary and can be used in conjunction.
- Structural (construction-related): levees, dams, floodways, disaster-resistant construction, “smart” building, well-enforced building codes
- Nonstructural (nonconstruction-related): natural defenses, insurance, risk mapping, zoning ordinances, economic incentives, hazard forecasting/warning, catastrophe bonds.

Groupings

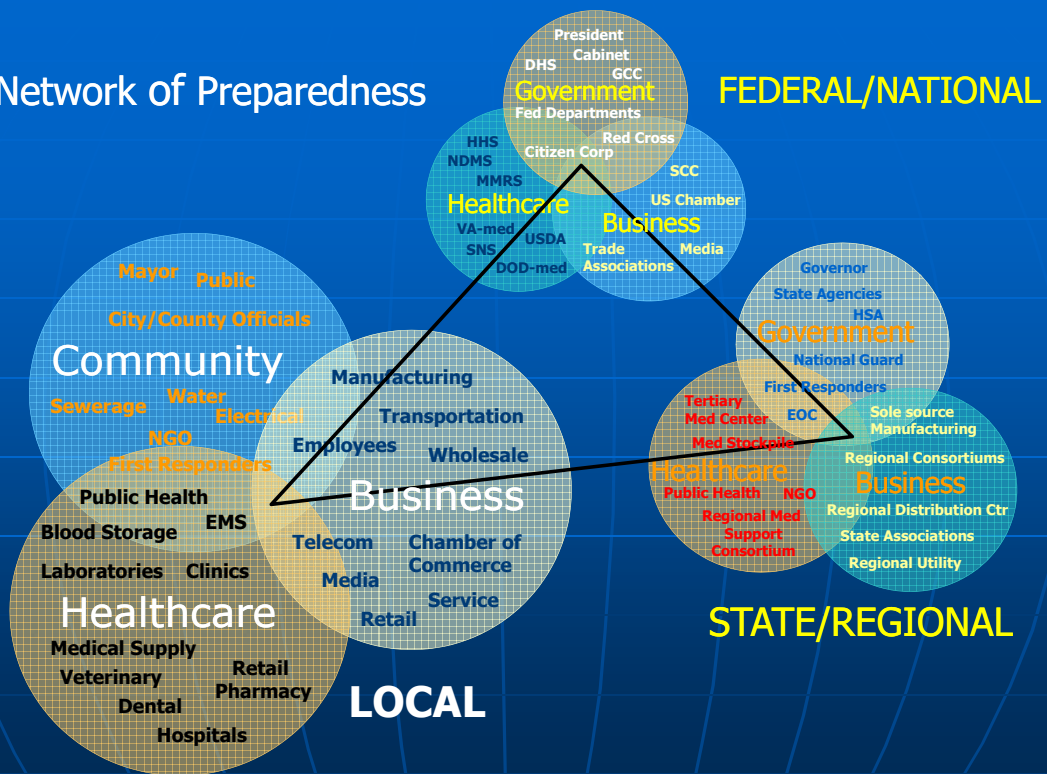


Potential Functional Areas

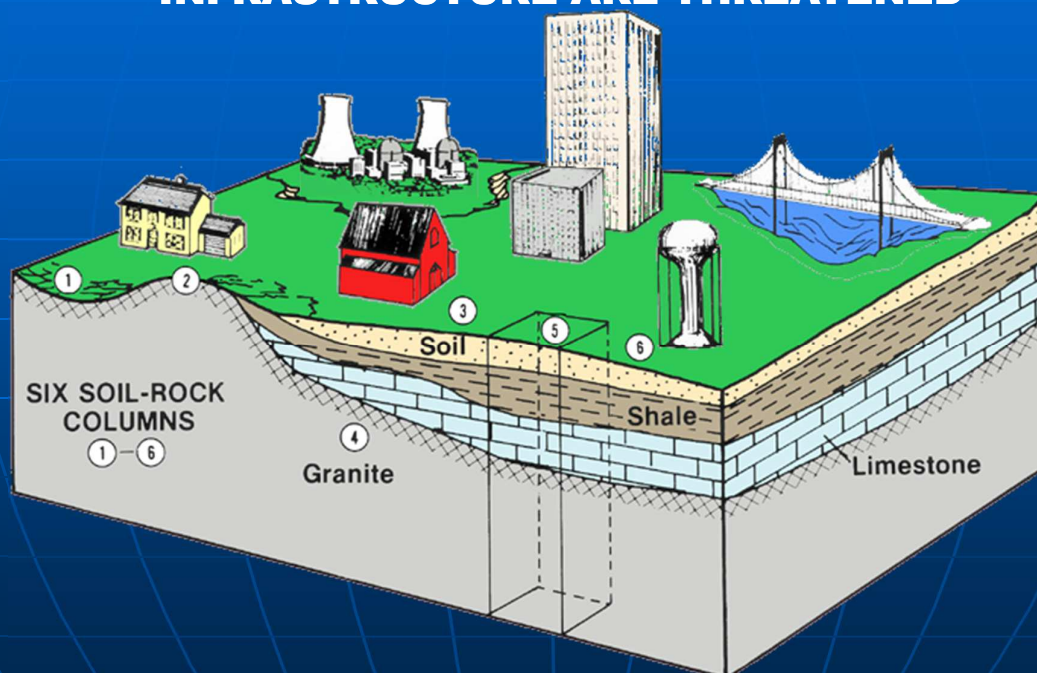
- Command & Control
- Saving Lives
- Search & Rescue
- Temporary Medical Care
- Evacuation including Medical/Special Needs
- Transportation/staging & distribution of critical resources
- Sheltering
- Hosting
- Schools
- Access control & reentry
- Power, water & ice distribution
- Volunteer & donations management
- Hazardous materials
- External affairs
- BIG partnership
- Private sector coordination
- Critical infrastructure

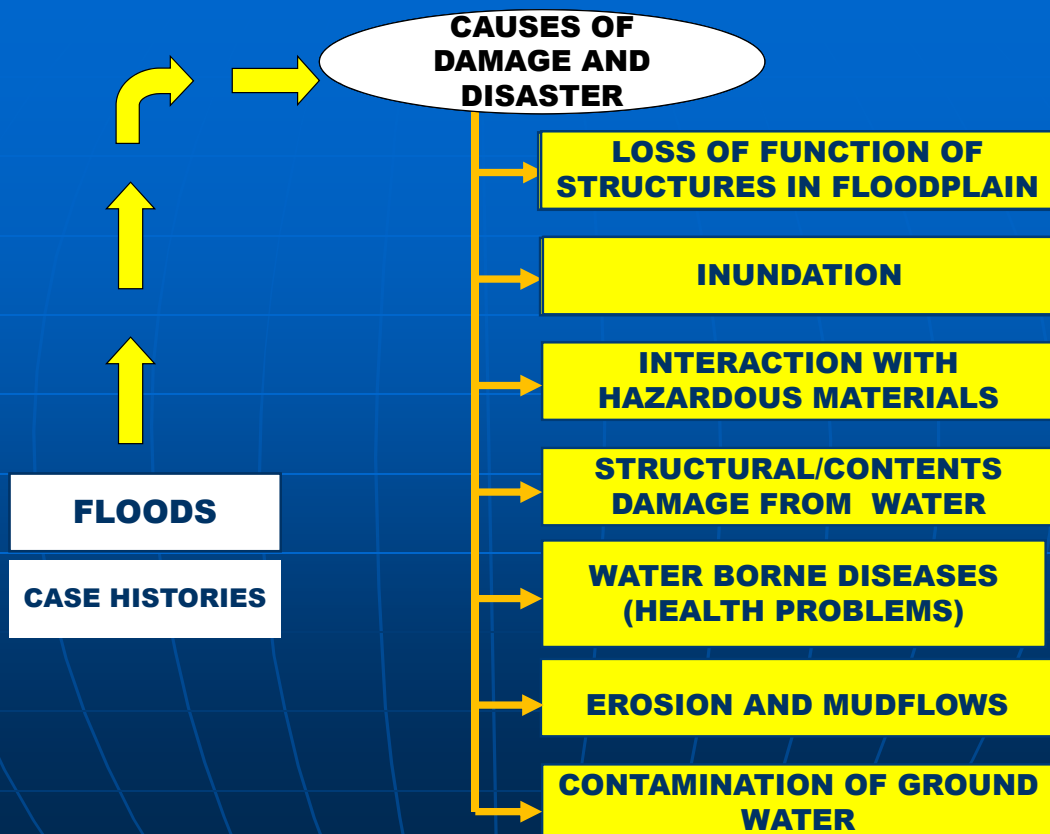
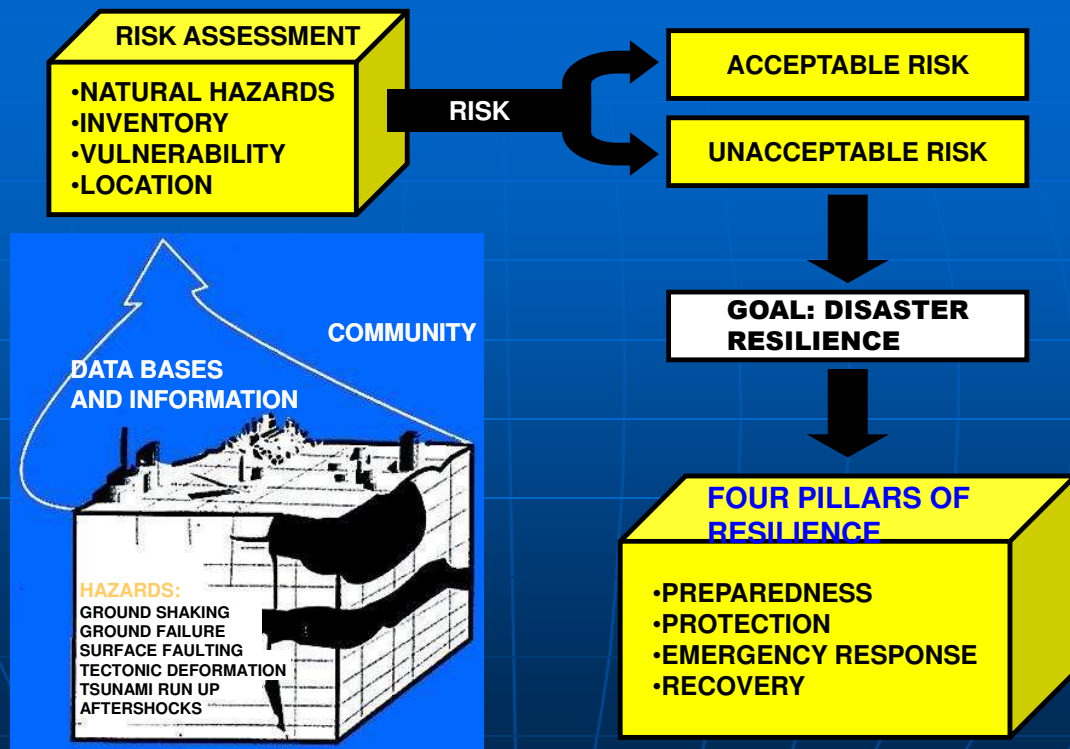


Network of Preparedness



AN INTELLIGENT CITY KNOWS WHAT IS HAPPENING AND WHAT TO DO WHEN PEOPLE, BUILDINGS AND INFRASTRUCTURE ARE THREATENED





Keys to Partnering Relationship

- Relationship is built on shared values
- Both commit to same vision
- Partners moves from opposing to supporting



**THANK
YOU!**

Ellis M. Stanley, Sr.
Managing Partner, Ellis Stanley Partners
ellisstanleysr@gmail.com