

Seismically Resilient Buildings: A Necessary but not Sufficient Condition for Urban Resilience



John W. van de Lindt, Ph.D., F. SEI, F. ASCE
Harold H. Short Endowed Chair Professor
Vice Chair, Infrastructure Resilience Division Executive Committee
Co-Director, NIST Center for Risk-Based Community Resilience Planning

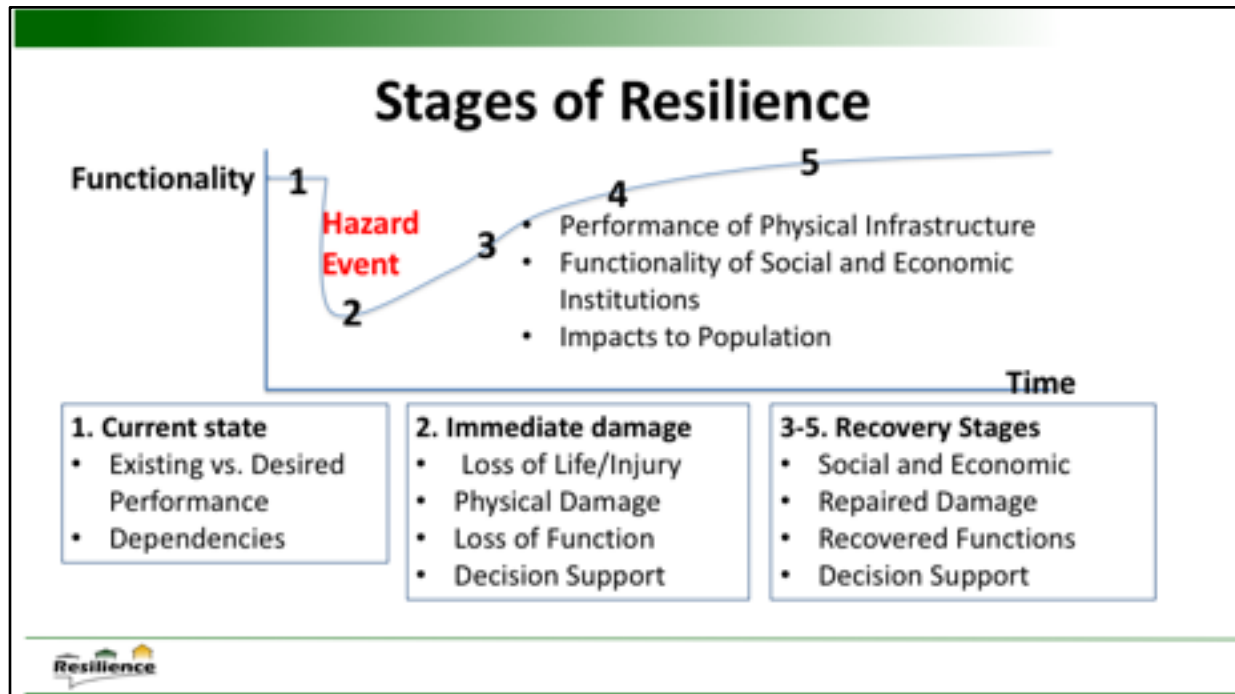


Japan Society of Civil Eng.

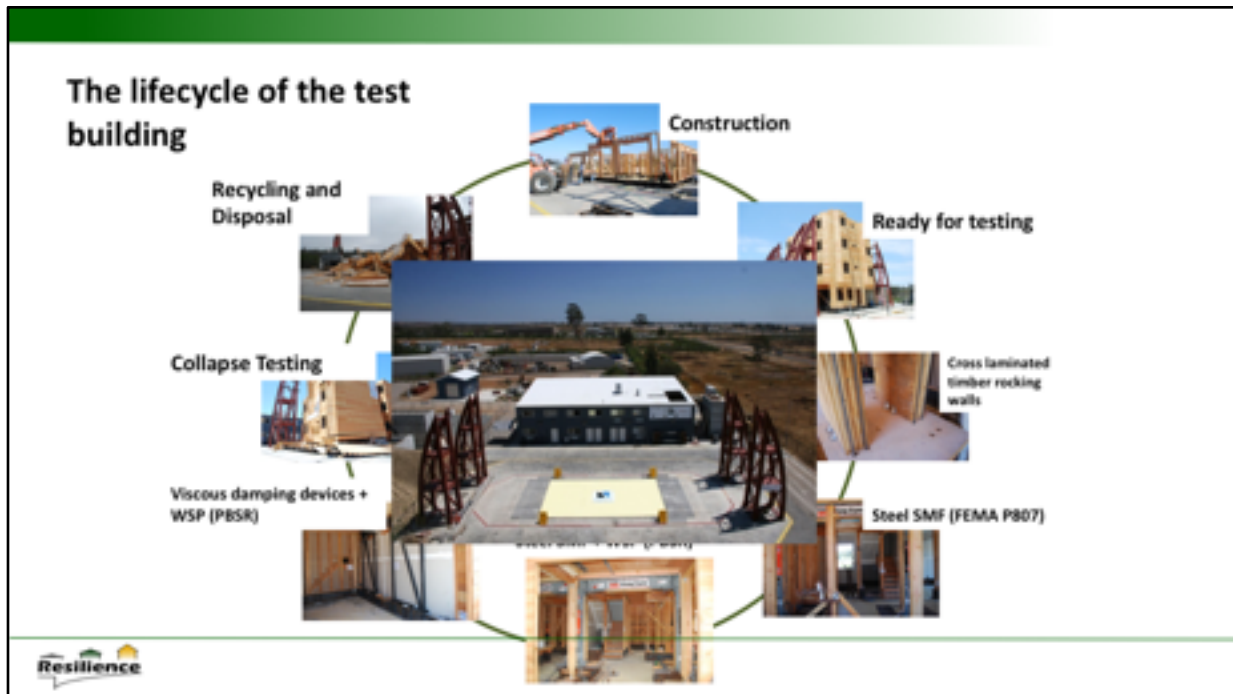


JSCE-ASCE-IRD May, 2019

Good morning. Urban resilience to earthquakes requires that buildings perform well in strong ground shaking, but for true resilience this is a necessary condition – but it is not a sufficient condition. As you’ve heard about already this morning – lifelines play a major role for physical infrastructure, but all physical infrastructure supports social and economic institutions.



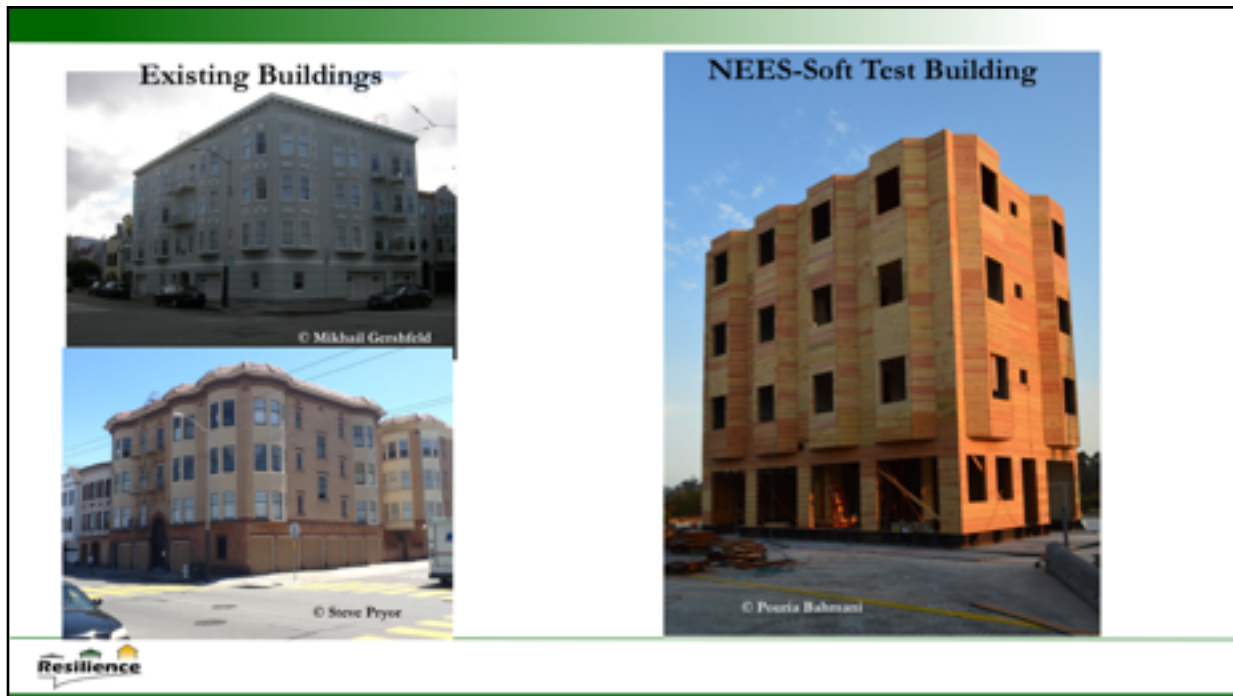
Resilience can be explained, or at least simplified, into five major stages of functionality – the current state, followed by damage from the event where emergency response is taking place – followed by recovery. Most engineering has focused on improving performance in earthquakes to reduce the effect of the hazard and less attention has been paid to stages 3 through 5. For a true urban resilience, planning at all stages must take place and remain active throughout the recovery.



Let me begin today's technical presentation with a past test program I led at the University of California San Diego's outdoor shake table in 2013. This represents thousands of wood buildings in and around San Francisco that we've built in the 1940's and are considered dangerous in a major earthquake. We conducted a number of retrofits to help inform policy and develop a technical understanding of the behavior of these buildings.



Some photos of construction.



The finished building on the right and some real buildings on the left. The shape and similarity is obvious, but the footprint of the test building was limited by the size of the shake table.

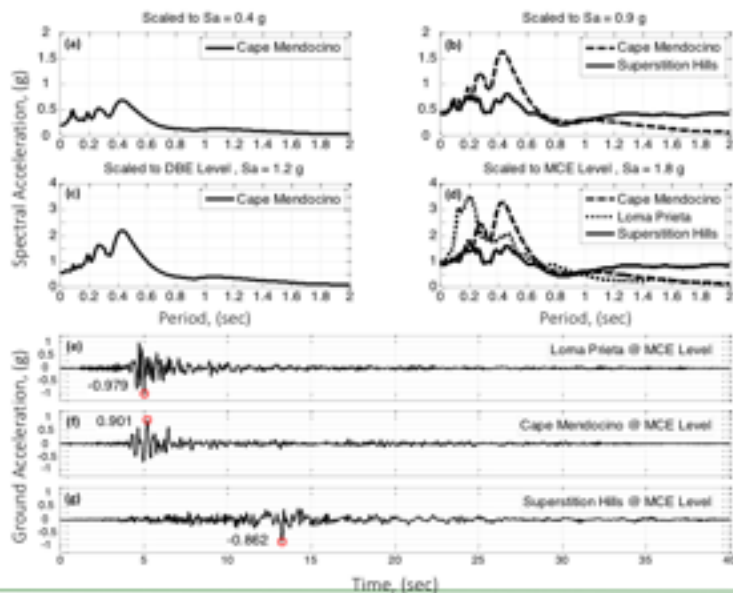
Phase V: Collapse Testing

97% of instrumentation and cables removed



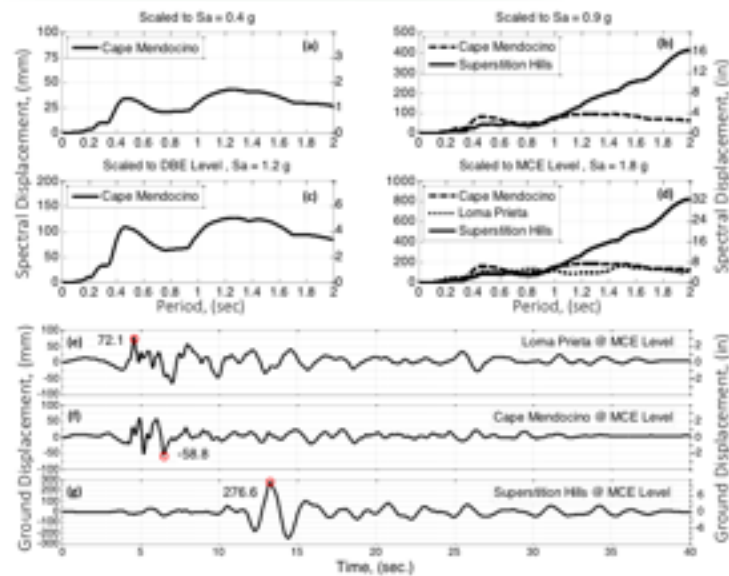
All retrofit tests were successful, even at Maximum Credible Earthquake scaling. However, to better understand and model the collapse behavior of this type of soft-story building, almost all the instrumentation was removed and the building and then it was tested without retrofits in place.

The Collapse Motion, Sa



In order to select a collapse motion - several different earthquakes were considered. Looking at the windows in the top right one can see that scaling to MCE level - the Loma Prieta earthquake looks quite significant as does the Cape Mendocino record.

The Collapse Motion, S_d



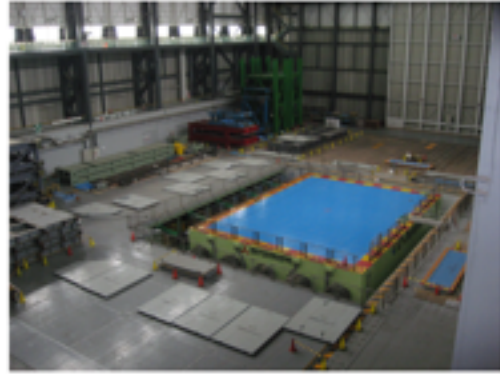
However, when one considers the spectral displacement, clearly the Superstition Hills earthquake appears to be a more significant event. The period of the un-retrofitted building being tested is approximately one second. One can see that as the period elongates during shaking likely in excess of two seconds the spectral displacement increases significantly.







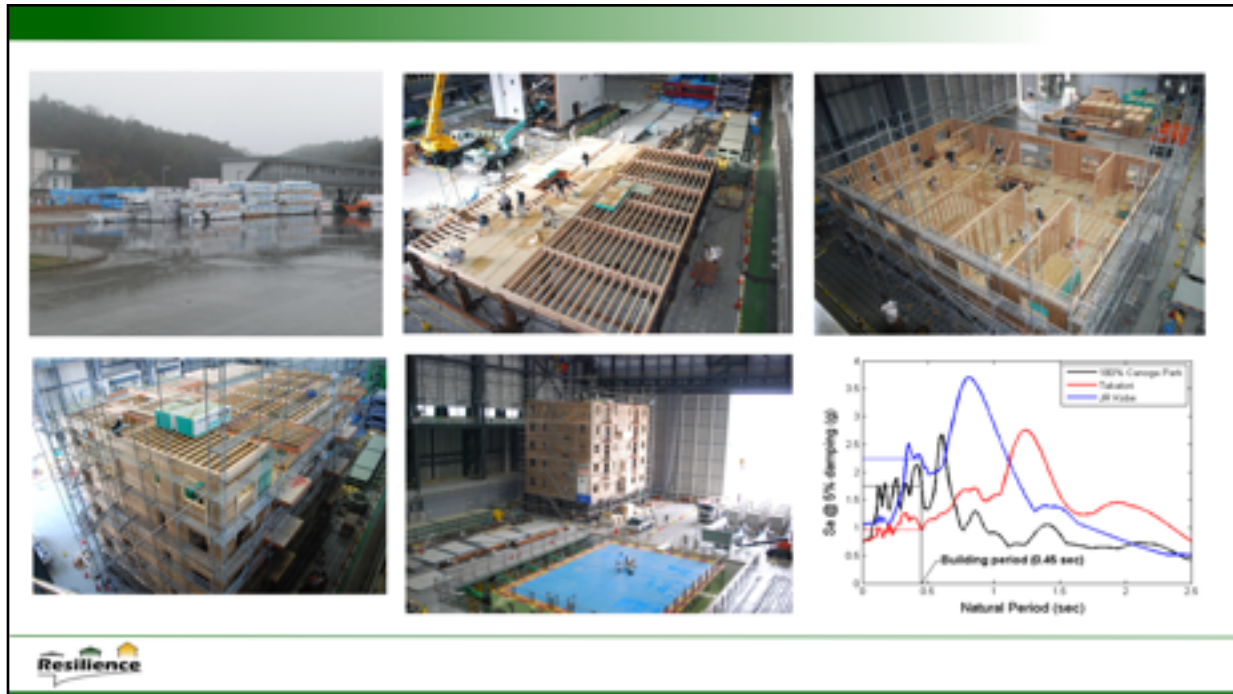
Here are some images of the collapsed building.



E-Defense in Miki, JAPAN



We now move on to a familiar shake table where I led a test program in 2009. This was the first US collaboration at E-Defense and was funded by the network for earthquake engineering simulation or NEES.



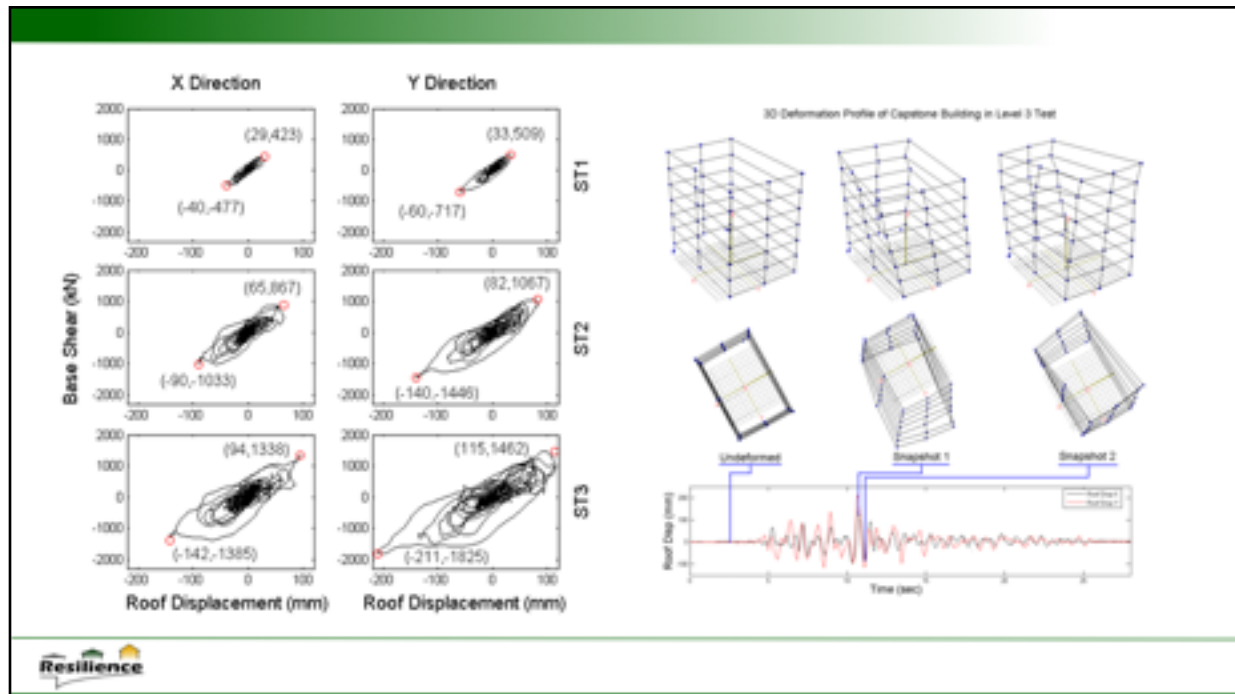
Here are some photos of materials shipped from the US, as well as construction photos. On the bottom right the spectral acceleration, or response spectra, for the 180% Canoga Park record that was used in the MCE level shake is shown in black.



This is the maximum credible earthquake test on July 14, 2009 at E-defense. The six story wood frame building that was constructed using the performance-based design approach. The performance objective was to limit damage to non-structural damage at MCE level approximately using about a 50 percent non-exceedance probability for 2.2% inter-story drift.



This is the sixth floor during the same shake which experienced close to 2G acceleration.

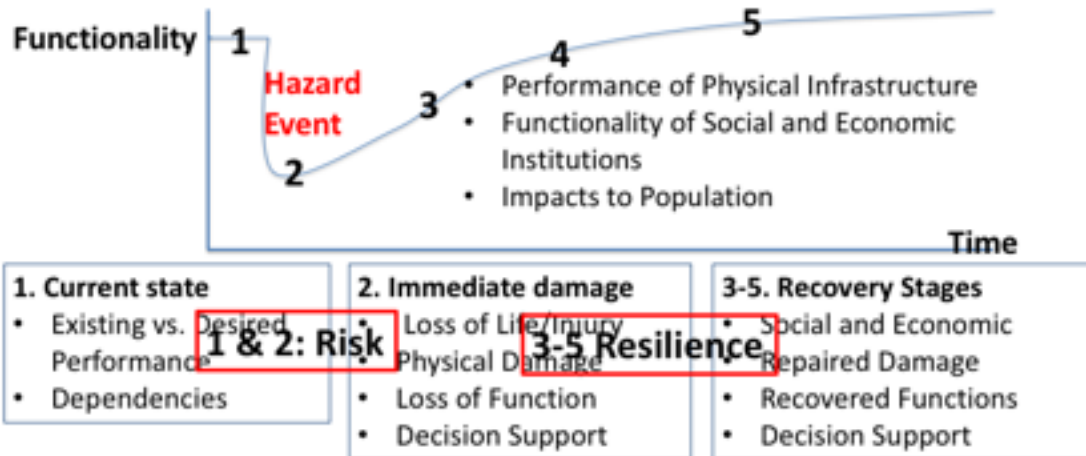


Here we see the hysteresis plots, and on the bottom right can see approximately 211 mm of total displacement at roof level and about 1800 kN base shear.

Expectations	Performance Expectations	Corresponding Peak Inter-story Drift (%)	Wood Framing and OSB/Plywood Sheathing	Gypsum Wall Board (GWB)
	Level A	0.1 – 1.0%	Minor Splitting and cracking of sill plates (some propagation) Slight sheathing nail withdraw	Slight cracking of GWB Diagonal propagation from door/window openings Partial screw withdraw Cracking at ceiling-to-wall interface
	Level B	1.0 - 2.0%	Permanent differential movement of adjacent panels Corner sheathing nail pullout Cracking/splitting of sill/top plates	Crushing at corners of GWB Cracking of GWB taped/mud joints
	Level C	2.0 - 4.0%	Splitting of sill plates equal to anchor bolt diameter Cracking of studs above anchor bolts Possible failure of anchor bolts	Separation of GWB corners in ceiling Buckling of GWB at openings
	Level D	4.0 – 7.0%	Severe damage across edge nail lines, separation of sheathing Vertical posts uplifted Failure of anchor bolts	Large pieces separated from framing Entire joints separated and dislodged

Of particular interest is the damage description that occurred. Level C, which was derived from low-rise wood construction during testing in the United States, wound up reducing to level A damage for mid-rise wood buildings. This was a significant result and is well documented in journal papers.

Stages of Resilience



Having now seen a building that is not resilient and a building that is resilient I return to the stages of resilience - stages one and two can be considered part of risk whereas stages three through five have a significant effect on the modeling or the complexities of understanding resilience. They are the most difficult to model.

Overview of the Center

- Development of measurement science and technology (NIST/U.S. Department of Commerce)
- Twelve-university - partnership funded by U.S. National Institute of Standards and Technology.
- Understanding and quantification of factors that make a community resilient to natural, technological, and human-induced hazards



National Center for Supercomputing Applications



So, before I go further I would like to introduce the Center for Risk-based Community Resilience Planning funded by the National Institute of Standards and Technology. I Co-direct the Center which is a 12 University partnership with NIST and involves the National Center for Supercomputing Applications. The overall objective of the center is to understand and quantify factors that make communities resilient to hazards.

20

Centerville, USA: A Virtual Community

Purpose: Provide researchers a simplified illustration of how individual infrastructure portfolios and infrastructure and their dependencies can be modeled; linkages to social and economic systems.



- 19 building archetypes for wind developed from Centerville
- Archival documentation in Sustainable and Resilient Infrastructure
- Illustrative example for EQ and tornado, but users can explore other hazards using Centerville
- The Centerville storyline was completed in early 2017; some extension ongoing



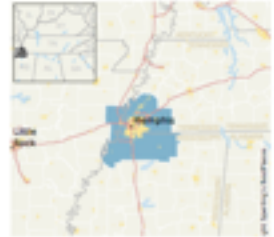
Without going into too much detail, Centerville is a virtual community that was designed to accelerate interdisciplinary collaboration as well as stress many of the models to better understand how to connect economics, social science, and the physical structure.

22

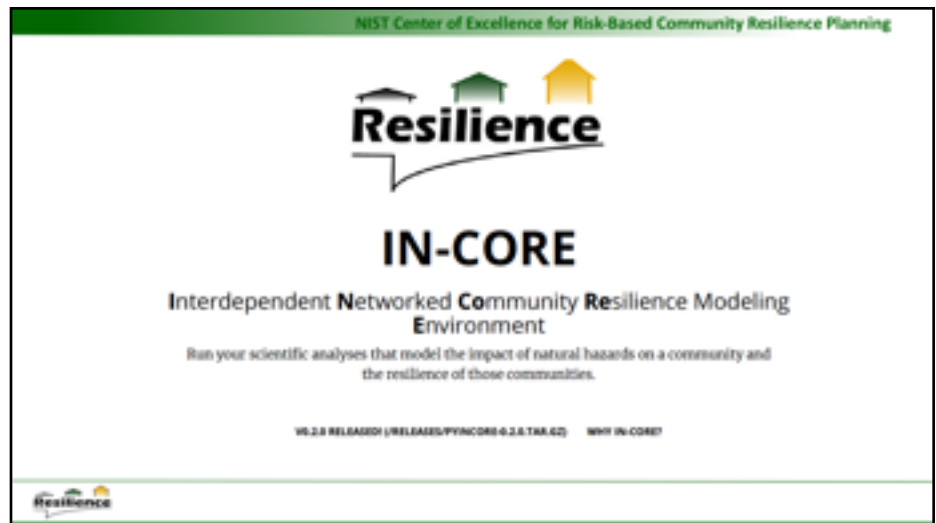
Memphis Metropolitan Statistical Area

Purpose: Investigate scaling of research tools to large urban testbed; spatial CGE; and initiate integration of process flow for decision support

- Large population of 1.4M; includes Shelby County
- CGE is highly spatialized
- Algorithms for EQ and flood scenarios
- Flood includes complex tier 2 model of river basin and rainfall
- Demonstration of process flow for decision



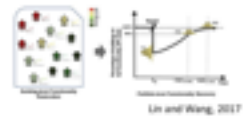
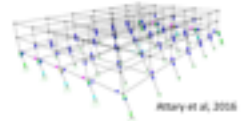
The Memphis metropolitan statistical area includes population of 1.4 million and represents the largest testbed. This allows center researchers to look at issues of scaling as well as the consideration of a spatial computer computable general equilibrium model for economics modeling.



IN-CORE is a computational environment that will be released in December. It will be open source and available to research communities worldwide and it is hoped that it will accelerate the ability of engineers and scientists to study resilience.

Physical Infrastructure: Buildings

- Seismic Analysis: Many existing MAEViz/Ergo fragilities
- Modeling at both the individual and portfolio level
- Default damage fragilities for new steel, RC, masonry, wood, and mobile homes
- Earthquakes and tsunamis; tornado and straight-line winds; coastal storm surge, waves, and flooding
- Four damage states
- Five functionality states
- New functionality taxonomy - interaction with the community
- Interdependency with other physical infrastructure, services, and the local economy



As the title of my presentation indicates clearly resilient buildings are a necessary condition to enable a resilient urban region.

Physical Infrastructure: Transportation

- Simulate existing roadway and rail networks
- Evaluation of critical routes for recovery
- Assess impact of select retrofits on network performance
- Hurricanes, floods, earthquakes, and tsunamis
- Damage fragilities include:
 - Roadway Bridges (as-built and retrofitted) for earthquake and flood scour
 - Roadways for earthquake and hurricane wave/surge
 - Railway bridges for earthquakes, hurricane, flood, and tsunami)
- Repair fragilities include:
 - Bridges, roadways, railway bridges, rail tracks



Moore and Padgett, 2017



Transportation is also key to connectivity of the physical urban environment and enables social institutions to serve the people within the community.

Physical Infrastructure: Water/WW

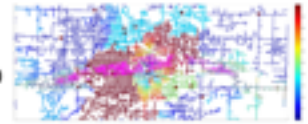
- Water/Waste water
 - Predict physical damage and functionality
 - Includes deterioration analysis
 - Critical path ID for recovery
 - Novel recovery functions based on priority, available resources, etc.
 - Interdependencies with other physical and social systems



Clearly water and wastewater is critical to having a resilient infrastructure and is interlinked with virtually all buildings and much of the other physical infrastructure.

Physical Infrastructure: EPN, NGN, and TN

- Electrical Power Networks (EPN)
 - Modeling of generating plants, substations, transmission poles, power poles
 - CA algorithm to determine service areas based on capacity-demand balance
 - Repair duration algorithms with interdependencies and critical path ID
- Natural Gas Network (NGN)
 - Includes damage for processing plant, compressor stations, pipelines, etc.
 - Network recovery modeling with critical path ID
- Telecommunication Networks (TN)
 - Wired and wireless/cellular
 - Recovery dependent on electrical poles



Attany et al., 2017



The electrical power network the natural gas networks telecommunications or communications in general must all remain operational or be restored quickly in order for a community to be considered resilient.

Physical Infrastructure: Aging and Deterioration

- Time-variant fragilities and repair rates
 - Environmental conditions
 - Loading conditions
 - Spatial variability for large networks
- Increment functions in lieu of reliability analyses in IN-CORE
 - Shift fragilities as a function of input
 - Bridges
 - Water network



Another situation that occurs and is quite evident in the US is the aging in deterioration of infrastructure. Such conditions must be taken into account when setting up the model of an urban area.

Economic Modeling and Analysis

- Spatial dynamic computable general equilibrium model (SD-CGE)
- Incorporate infrastructure damage and population disruptions
- Provide range of economic and fiscal impact
 - Code changes, scenario type
- Includes:
 - Losses in production, wages, jobs in local econ sectors
 - Investigates with policy levers; optimal allocations of resources



Economic models are also critical. The physical infrastructure, including buildings, as well as social systems directly affects economic recovery or resilience. Spatial dynamic computable general equilibrium models are one of the most advanced techniques available to economists and is being included in urban resilience modeling.

Social Science Modeling and Analysis

- Models focus on:
 - Population and employee dislocation
 - Housing restoration and recovery
 - Business interruption and restoration
- Suite of tools
 - Identify socio-demographic and socio-economic vulnerability characteristics
- ASCE IRD – Social Science, Policy, Economics, Education, and Decision (SPEED) Committee



If we consider all physical infrastructure the purpose of such infrastructure is to serve the population or the needs of the population, social science modeling and analysis is critical to understanding and being able to model a resilient urban area. This includes models such as population and employee dislocation, housing restoration and recovery, and of course business interruption and restoration. The ASCE Infrastructure Resilience Division has five committees as you've heard about. I service co-chair of the social science, policy, economics, education, and decision committee known as SPEED. Such modeling and enabling consideration of these areas within civil infrastructure projects is the objective of the SPEED committee.

Recovery Modeling

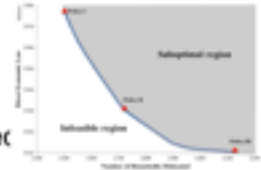
- Recovery of community building portfolio approach (MMSA)
- Each network has recovery functions
- EPN – recovery of services to buildings and networks
- TN – recovery of services to businesses and other buildings
- Water/WW – recovery of services to buildings
- Social systems and services – housing, education, healthcare, population
- Economic systems and services – recovery of tax base, employment, earnings by sector



Finally, recovery remodeling is critical. Earlier, I mentioned the stages of resilience - stage one and stage two have been modeled by engineers and scientists worldwide for many decades. Stages three through five are new to most engineering and thus are more difficult to model. However, during recovery we work in the space that defines resilience stages three through five.

Optimization & Decision Modeling

- Enable open source solvers or enable commercial solvers
- Non-traditional optimization techniques employed; built directly into IN-CORE
- Multi-objective decision for mitigation of direct economic loss and population dislocation
- Optimization objective will connect with the CGE models estimate of socio and econ metrics/measures



Zhang and Nicholson, 2018



In order to provide risk informed decision support there are usually competing objectives subjected to a variety of constraints. In engineering, we often work with to find a Pareto front upon which decision and/or policy-makers can selected from a group of laterantives based on needs and opinions that cannot be modeled. This can be performed in many dimensions however it's more typical for decision-makers to make these decisions in up to 4 to 5 dimensions or simply parameters. This can be accomplished with the help of a dashboard approach rather than weighting factors to ensure it is risk-informed.

Thank you!
resilience@colostate.edu jerry@colostate.edu
Twitter: @commresilience



Acknowledgments

Center of Excellence: The Center for Risk-based Community Resilience Planning is a NSF-funded Center of Excellence; the Center is funded through a cooperative agreement between the U.S. National Institute of Standards and Technology and Colorado State University (NIST Financial Assistance Award Number: 70NAN615H044). The views expressed are those of the presenter, and may not represent the official position of the National Institute of Standards and Technology or the U.S. Department of Commerce. Numerous researchers with the Center of Excellence contributed to the contents of these presentations and a sincere thank you is due to everyone affiliated with the Center for Risk-based Community Resilience Planning.

NEES-Soft: Some of the material is based upon work supported by the National Science Foundation under Grant No. CMMB-0806433 (NEES Research) and NEES Operations. Any opinions, findings, and conclusions or recommendations expressed in this material are those of the investigators and do not necessarily reflect the views of the National Science Foundation. The presenter kindly acknowledges the Co-Principal Investigators of the NEES-Soft project: Michael D. Szymans at Rensselaer Polytechnic Institute, Wei-Chang Pang at Clemson University, Xiaozou Shan at Western Michigan University, Michael Garbino at Cal Poly - Pomona, and senior personnel David W. Rossmeyer at Rensselaer Polytechnic Institute, Andre Filiatrault at University of Buffalo, Gary Muchowski at Structural Solutions Inc., Shihong Pei at South Dakota State University, Douglas Hammer at U.S. Forest Products Lab., David Mar at Tipping-Mor, and Charles Chabwell at Cal Poly - SLO, and the graduate students working on the project, Pierre Behrmann, Jingjing Tian, and Enshad Darsi. A special thank you to Jeff Isler (BRAC) for his collaboration and Steve Foster for his collaboration through Simpson Strong-Tie on the SDRF design, installation, and testing. Thank you to Simpson Strong-Tie, SIA/SC, U.S. Forest Products Lab, NIST/SP-080, NIST/SP-081, and all respective personnel. A special thank you to all of the NIST students Sandra Gutierrez, Rithi Silva, Gabriel Rosales, Rocky Chen, Connie Tsai. Others that have helped include staff Ishtai, Vishal Gopi, Steve Yang, Ed Santos, Tim Ellis, Omar Amori, and Russell DA. Finally, our sincere thank you to NIST and all site staff and site PI's at NIST/SP-080 for their help getting the tests ready.

NEESWood: Some of the material presented in this presentation is based upon work supported by the National Science Foundation under Grant No. CMMB-0806433 (NEES Research) and CMMB-0806440 (NEES Operations), and the authors are grateful to both the US site staff and UCSI site staff for their assistance during testing. Any opinions, findings, and conclusions or recommendations expressed in this material are those of the author(s) and do not necessarily reflect the views of the National Science Foundation. The presenter is grateful to the overall NEESWood project team made up of David W. Rossmeyer, Andre Filiatrault, Rachel A. Gordon, and Michael D. Szymans. Thank you also to Weichang Pang of Clemson University for his participation in the design portion of the Capstone test specimen. Thank you to NSF RES's Doug Allen and Kathryn Philtachner, researchers Chao Ni, Hiromasa Shimizu, Professor H. Iseda, Isamu Nakamura, Chikahito Minowa, N. Kawai, and Mikio Koshikawa. Two graduate students, Kazuki Tachibana and Tomoya Okazaki, contributed to the construction and instrumentation of the test specimen. Thank you also to Steve Foster and Tim Ellis of Simpson Strong-Tie Co. and David Chyne of Moss Homes USA. Edward Marquis and colleagues at AF&P, AF&P, and CanadaWood. Technical collaborators beyond the authors' affiliation included the Simpson Strong-Tie, U.S. Forest Products Laboratory, FP Innovations-Forintek Division, Moss Homes U.S.A., and Structural Solutions Inc. Financial and in-kind product and personal donations were provided by Simpson Strong-Tie, Moss Homes, B.C. Ministry of Housing and Social Development, Stanley Bootlick, Strucal Inc., Structural Solutions Inc., Louisiana Pacific Corp., Natural Resources Canada, Forestry Innovation Investment, AF&P-The Engineered Wood Association, American Forest and Paper Association, Hoesly, Kiewit, and Calvert Graham.

And so with that I would like to conclude and thank you for your time and attention. I'd also like to acknowledge the NIST for their funding of the Center of Excellence, a number of people that supported both the NEES-Soft and the NEESWood projects including the National Science Foundation. Finally, thank you to the Japan Society of Civil Engineers and ASCE.