

Seismic damage to public buildings in the M6.4 Yangbi earthquake in Yunnan, China

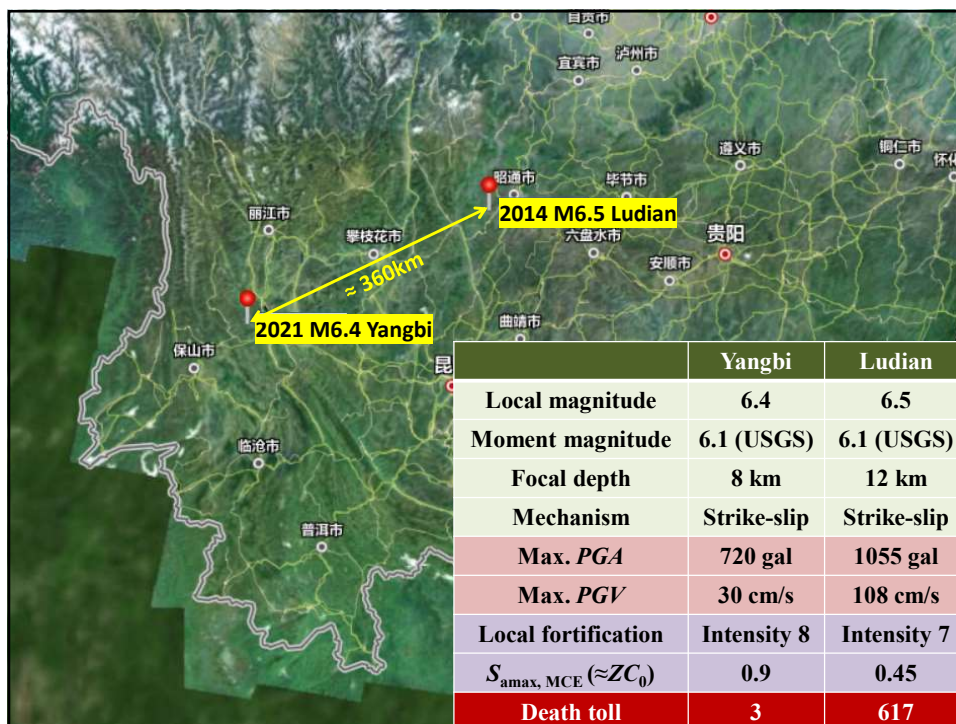
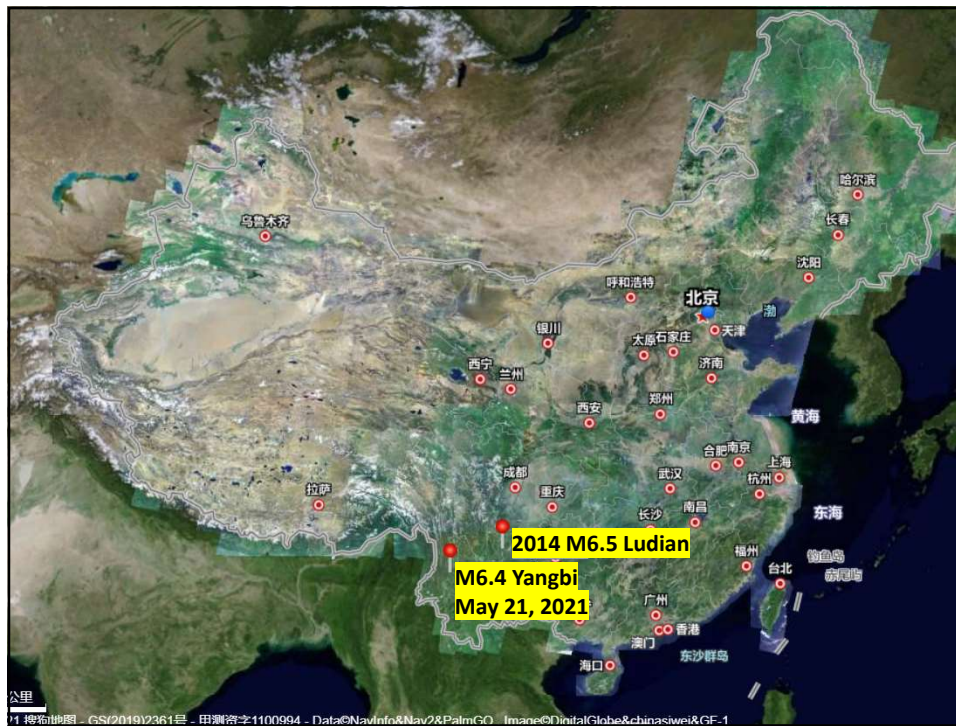
QU Zhe

Ph.D., Professor

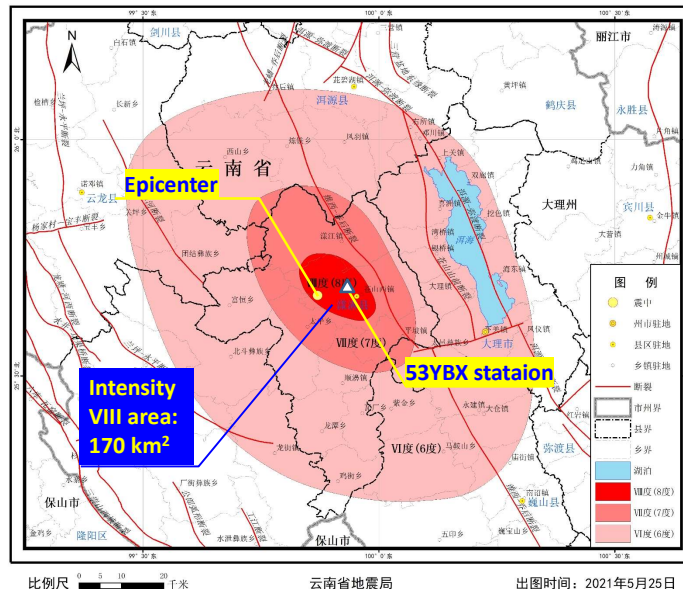


**中国地震局工程力学研究所
Institute of Engineering Mechanics, CEA**

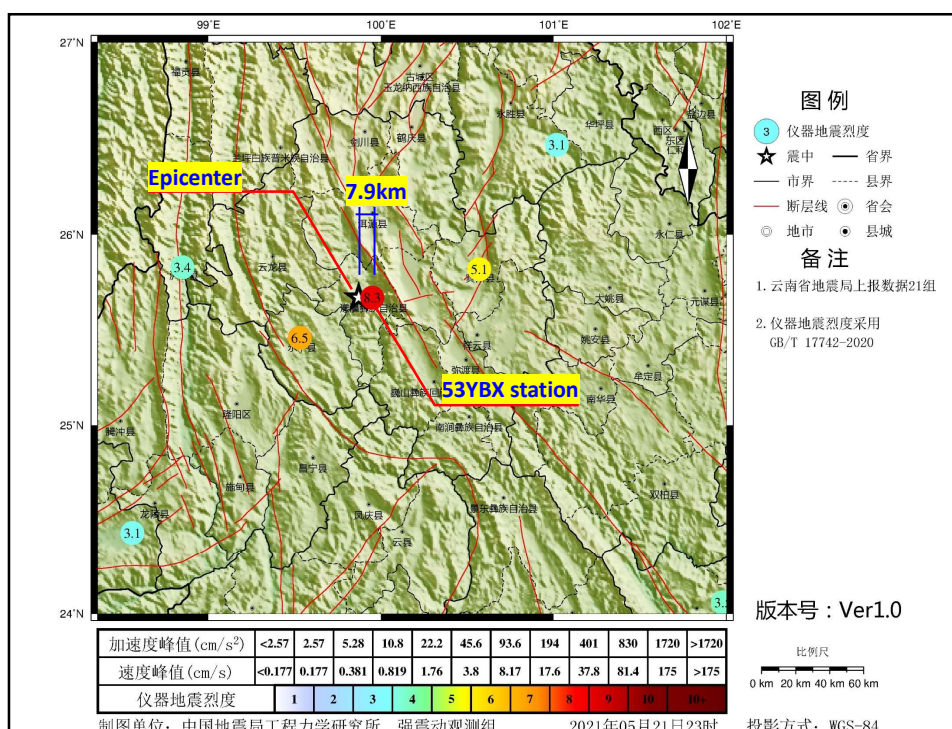
Background

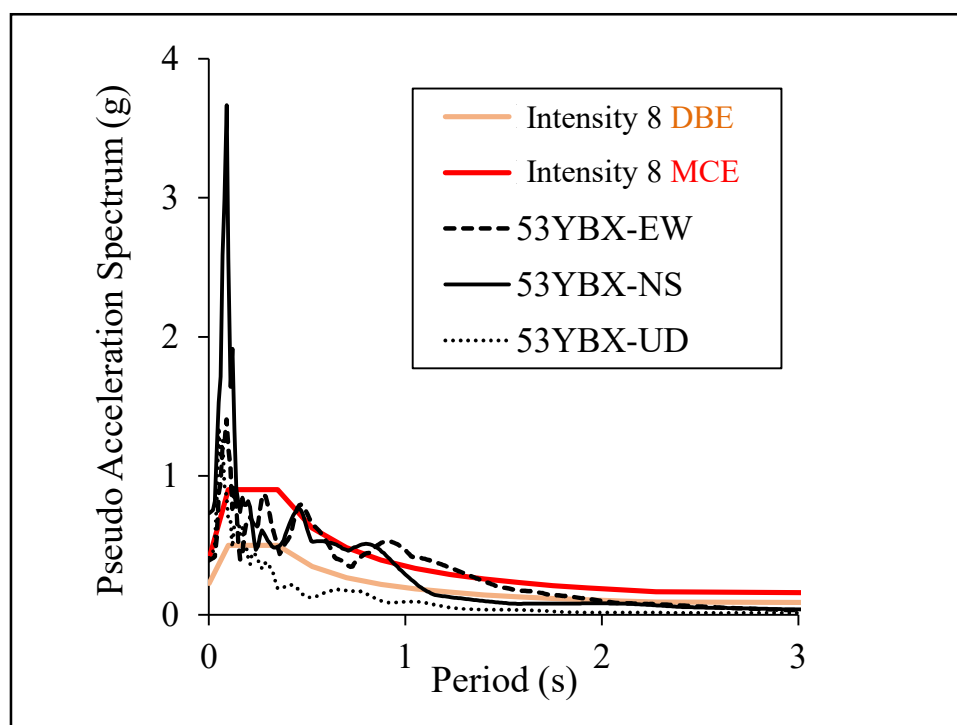
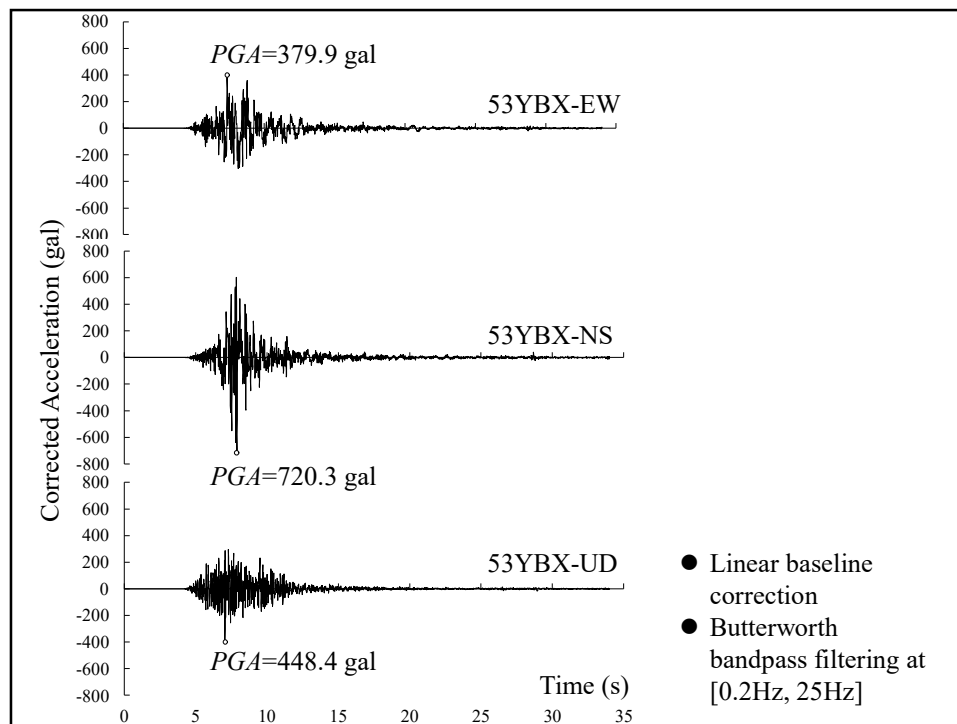


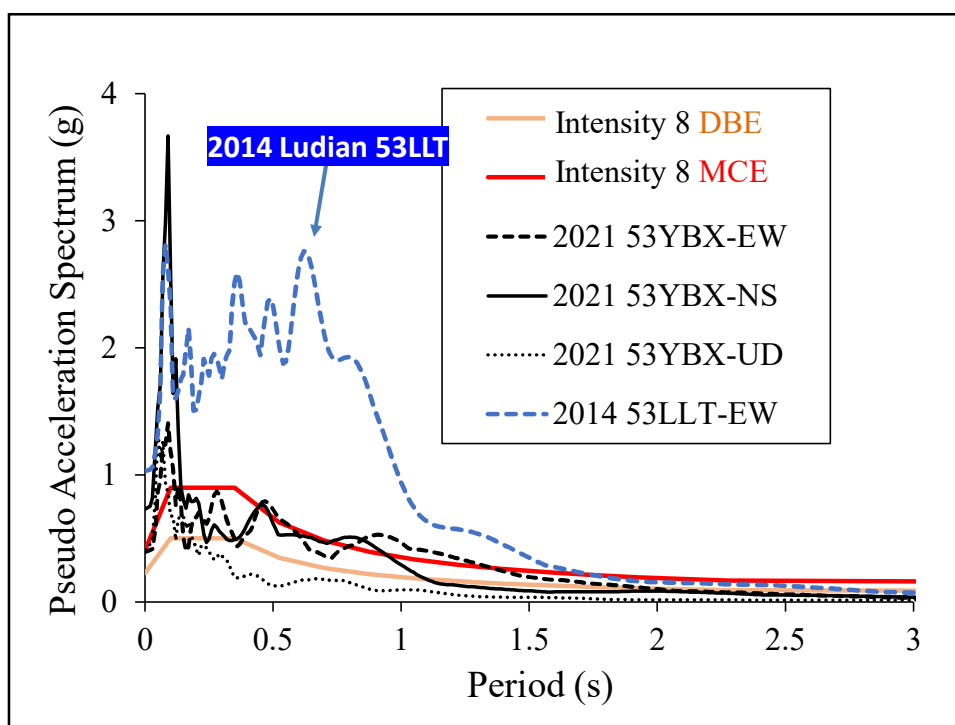
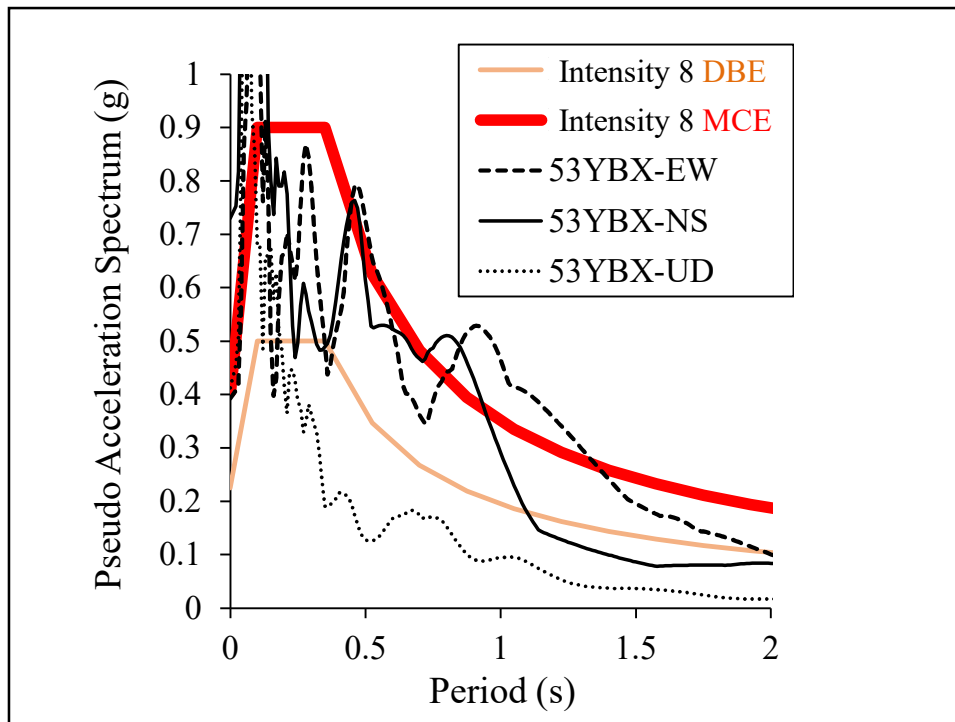
‘Liedu’ Map (烈度图) of M6.4 Yangbi earthquake



Modified Mercalli Intensity (MMI) based on on-site inspection



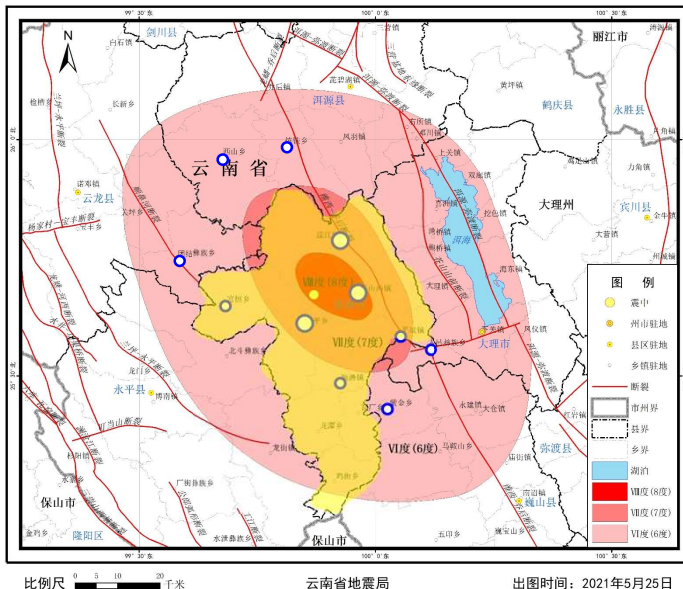




Emergency inspection of public buildings by MOHURD

国交省MLIT?

MMI Map of M6.4 Yangbi earthquake

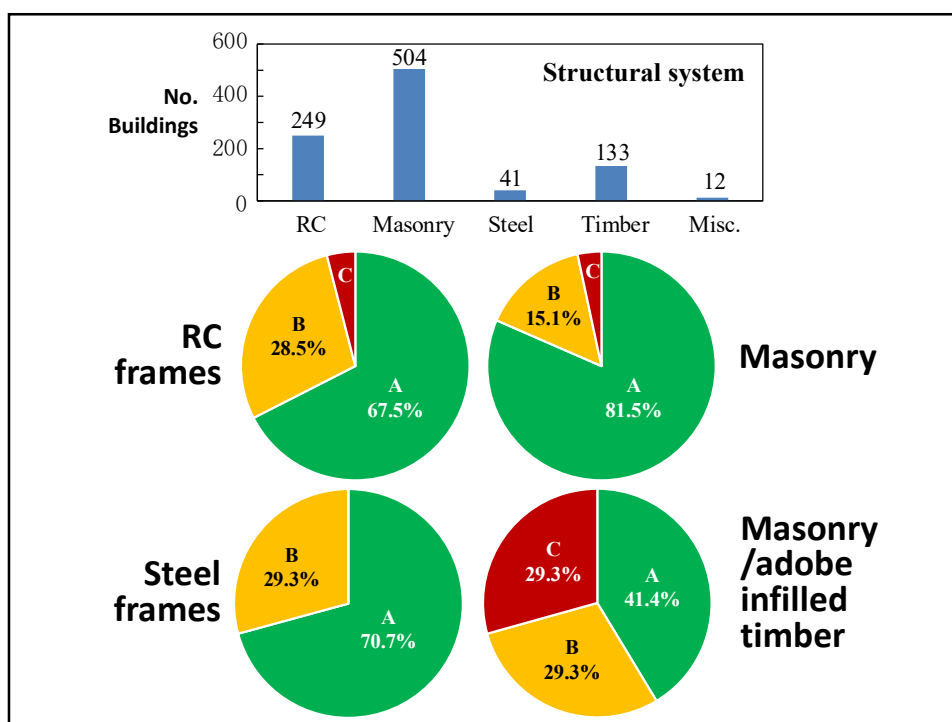
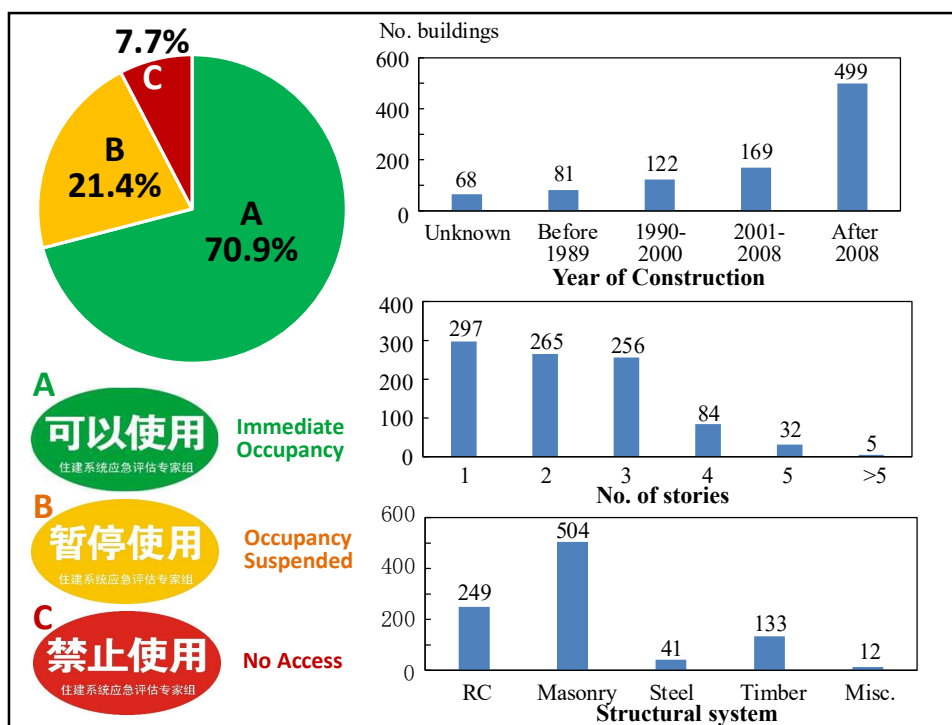


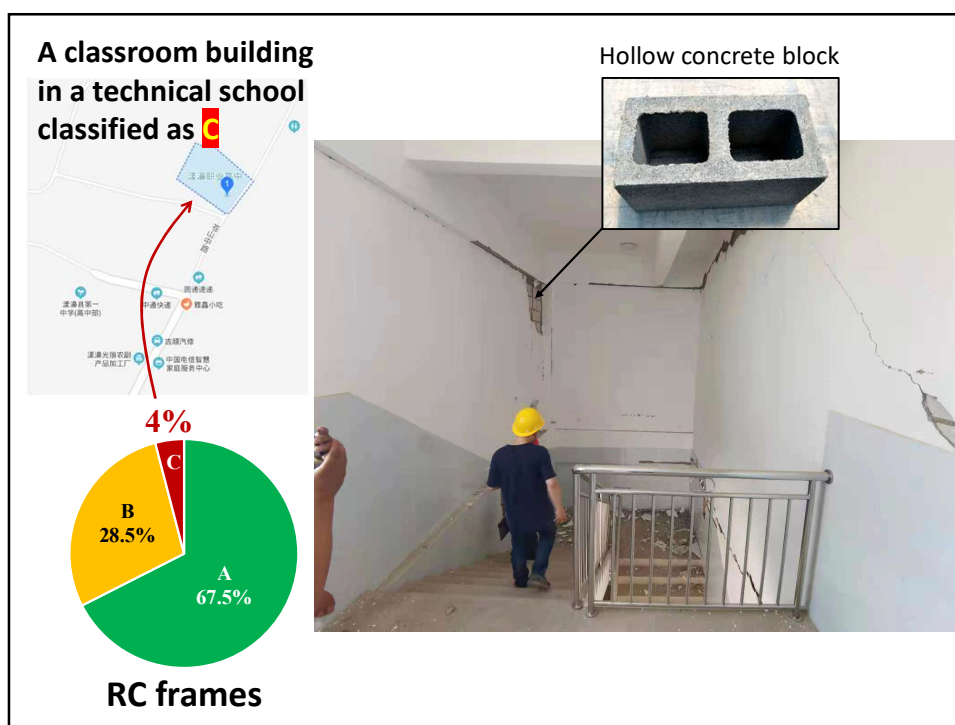
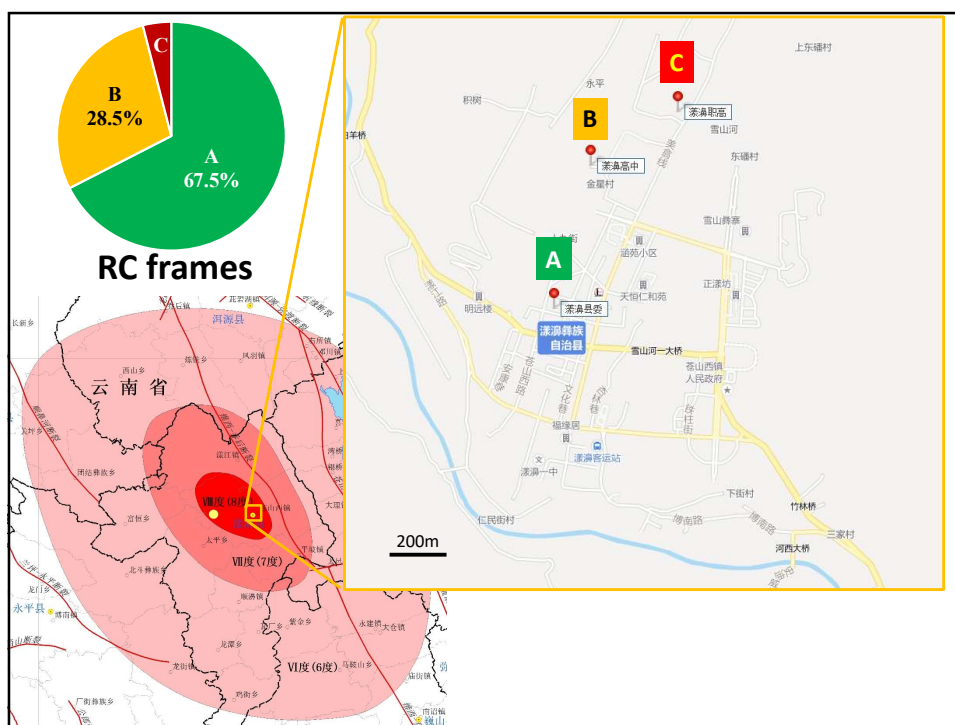
Inspected by 300
local experts and
engineers by May 24

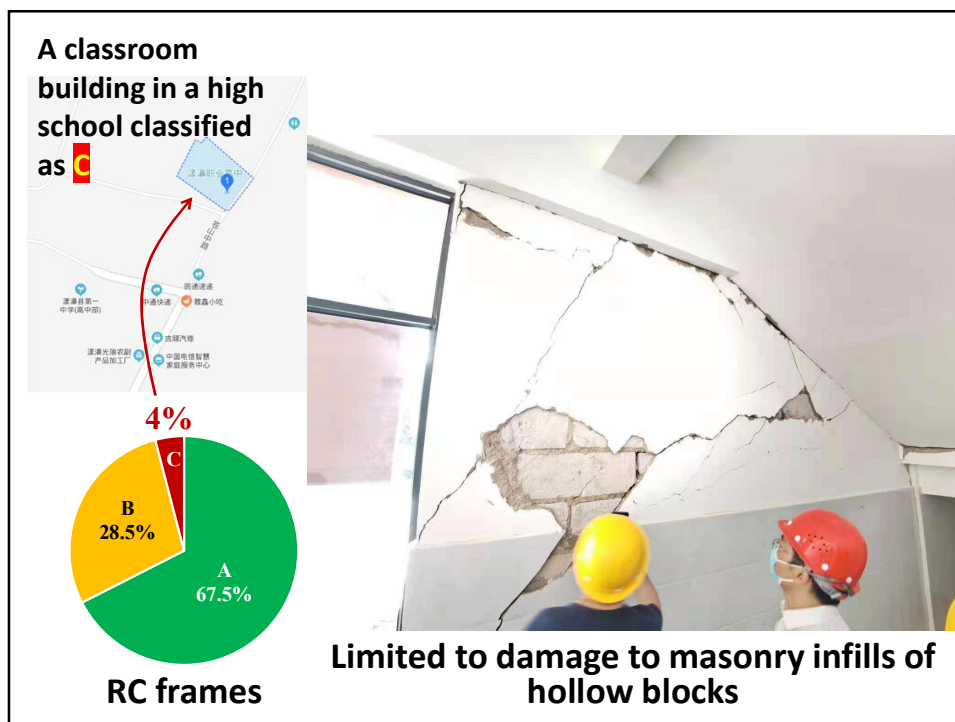
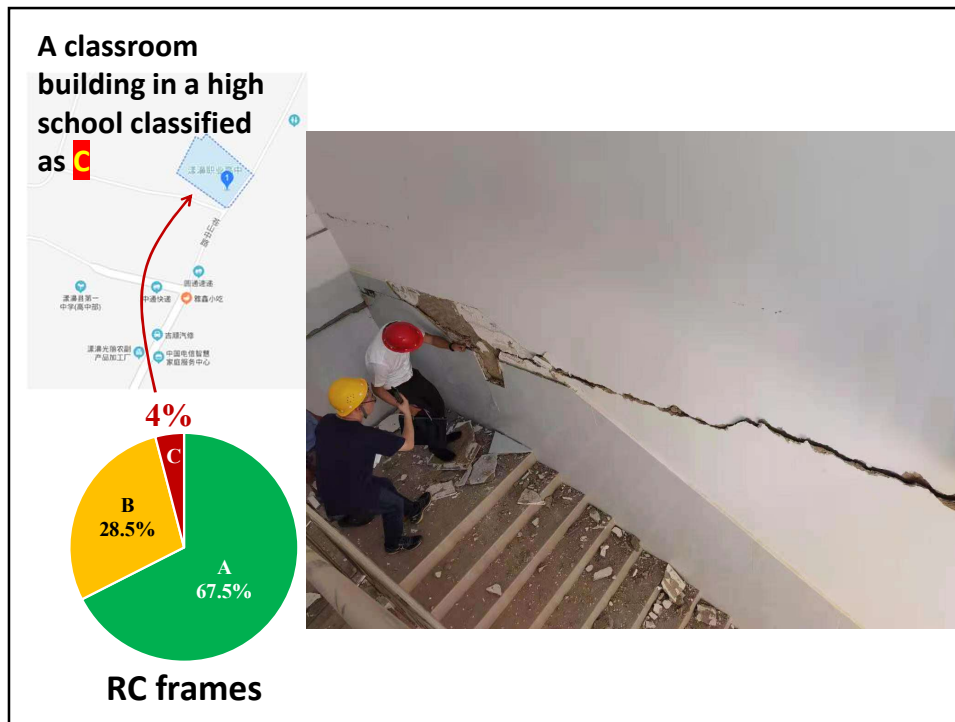
- 34,579 houses
- 1,393 public buildings

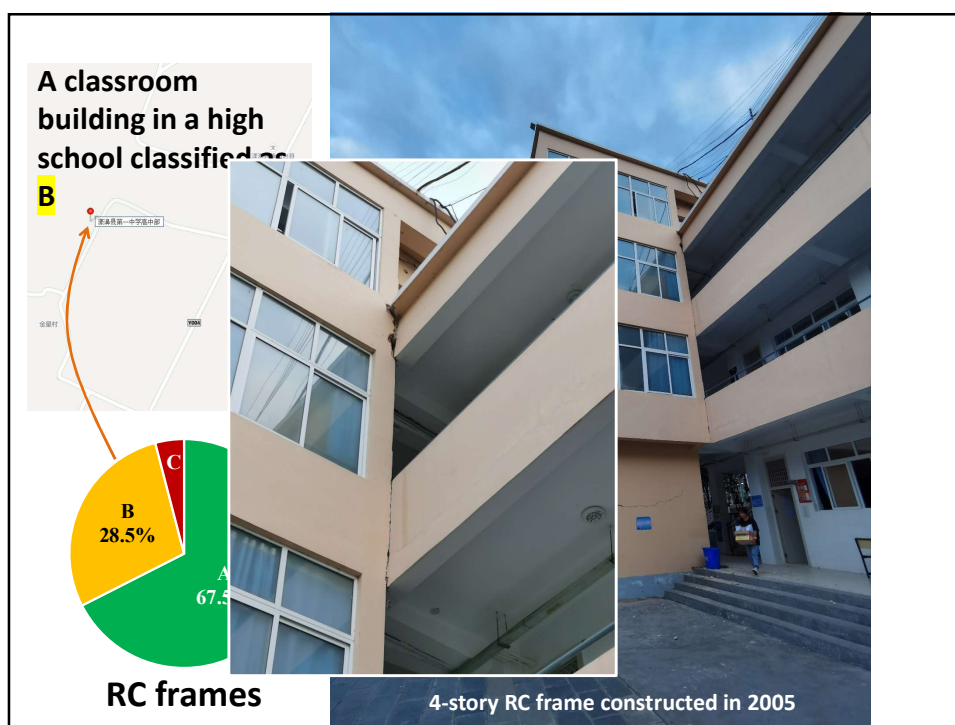
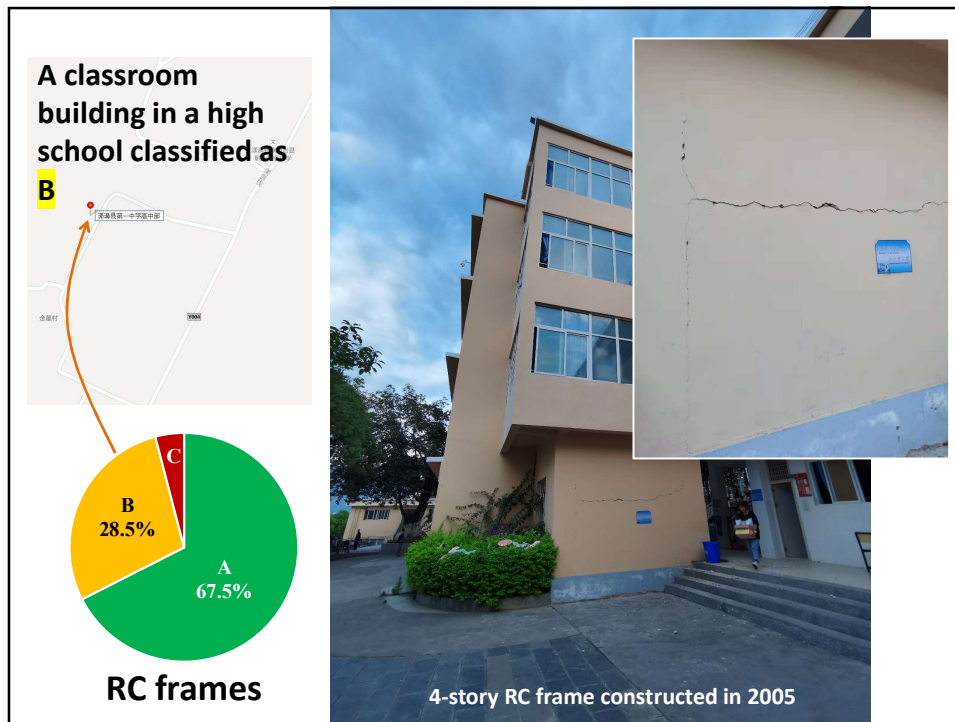
In Yangbi County,

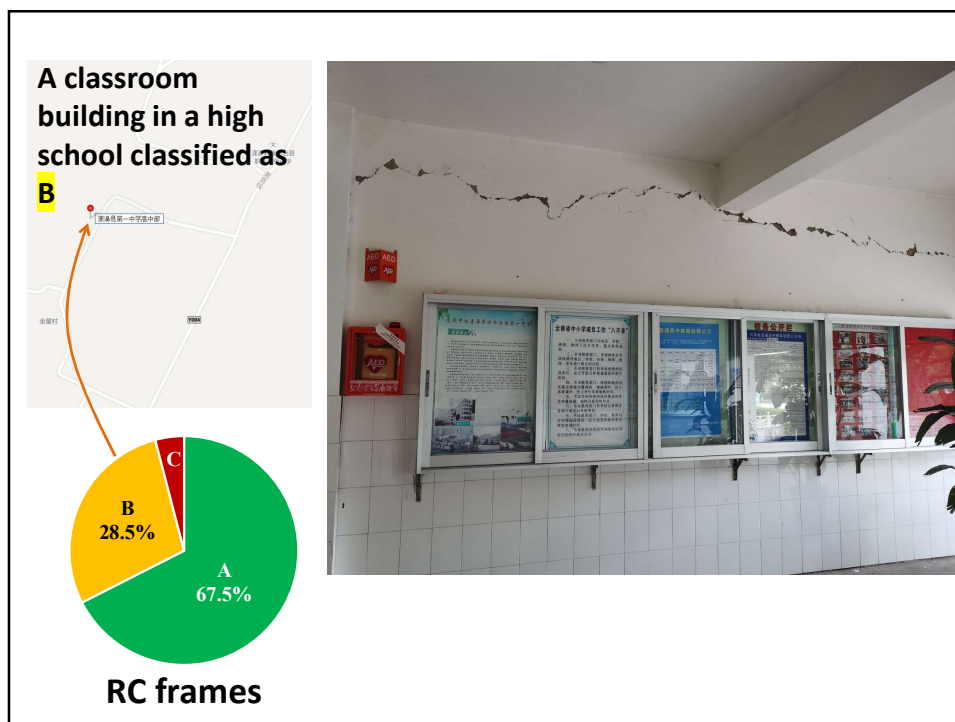
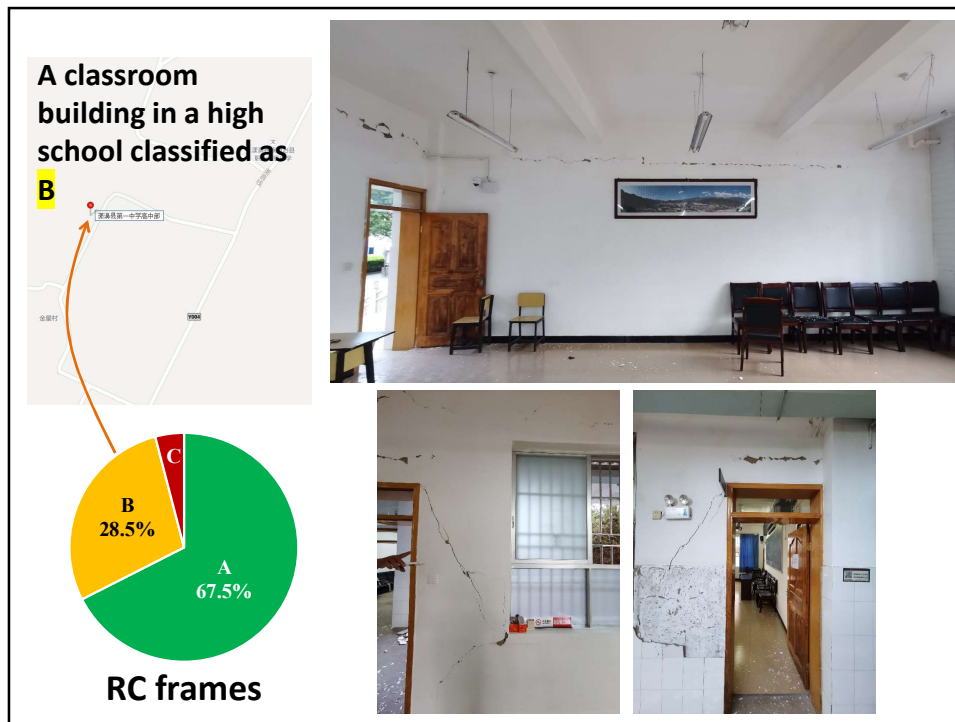
- 16,686 houses
- 939 public buildings

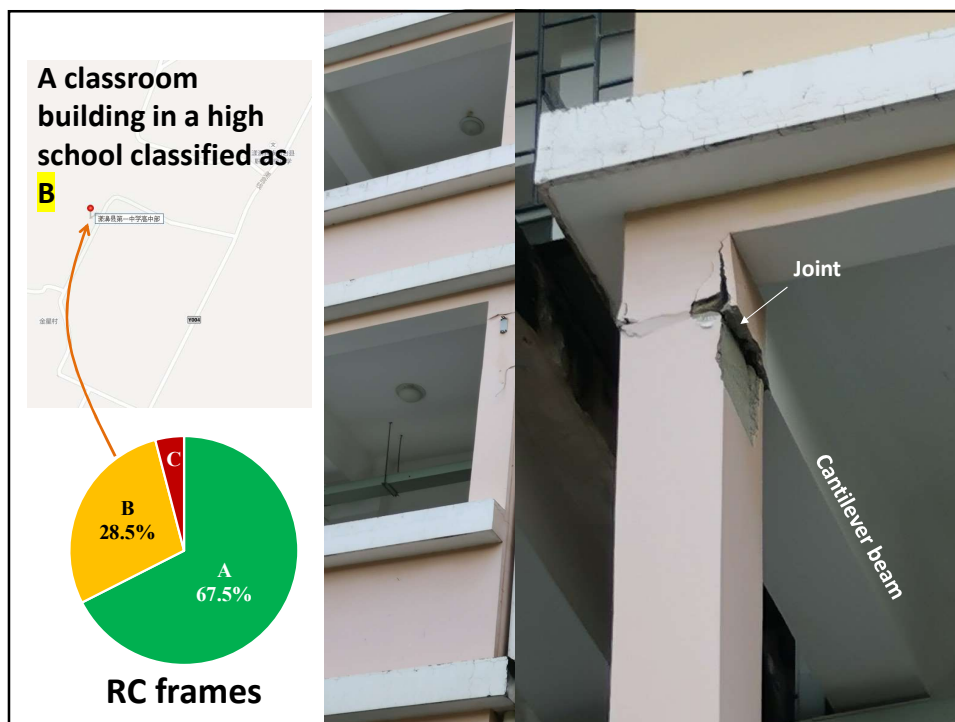
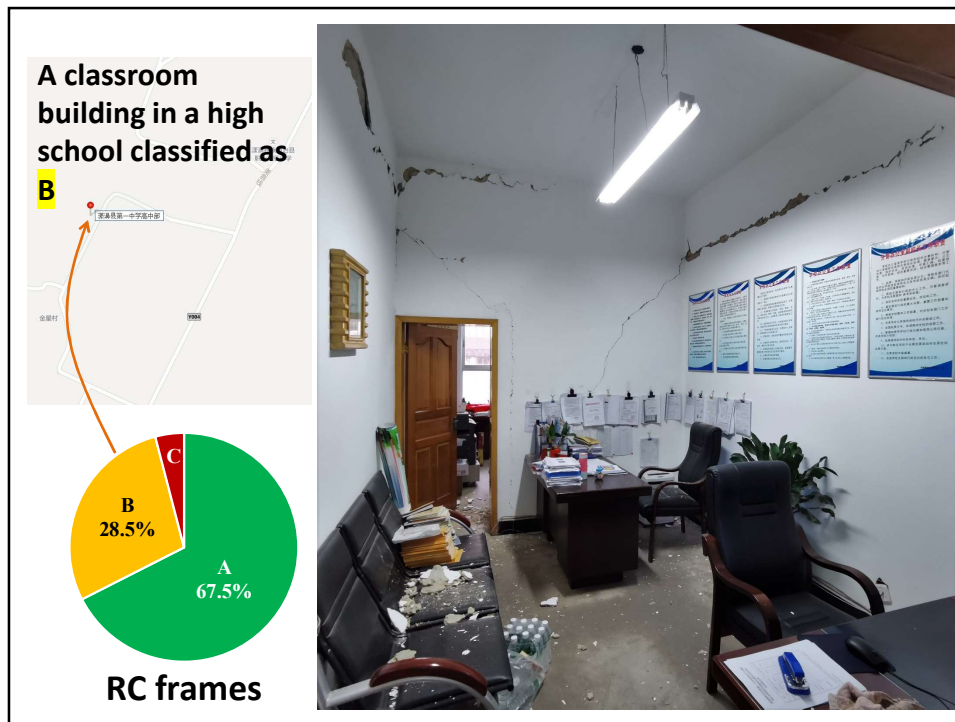


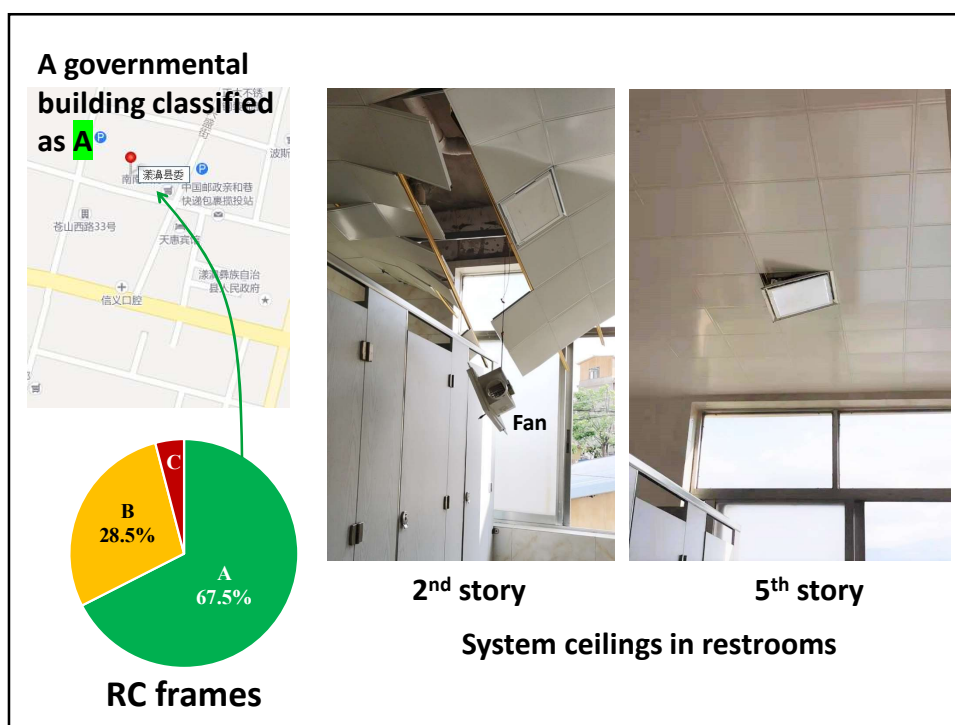
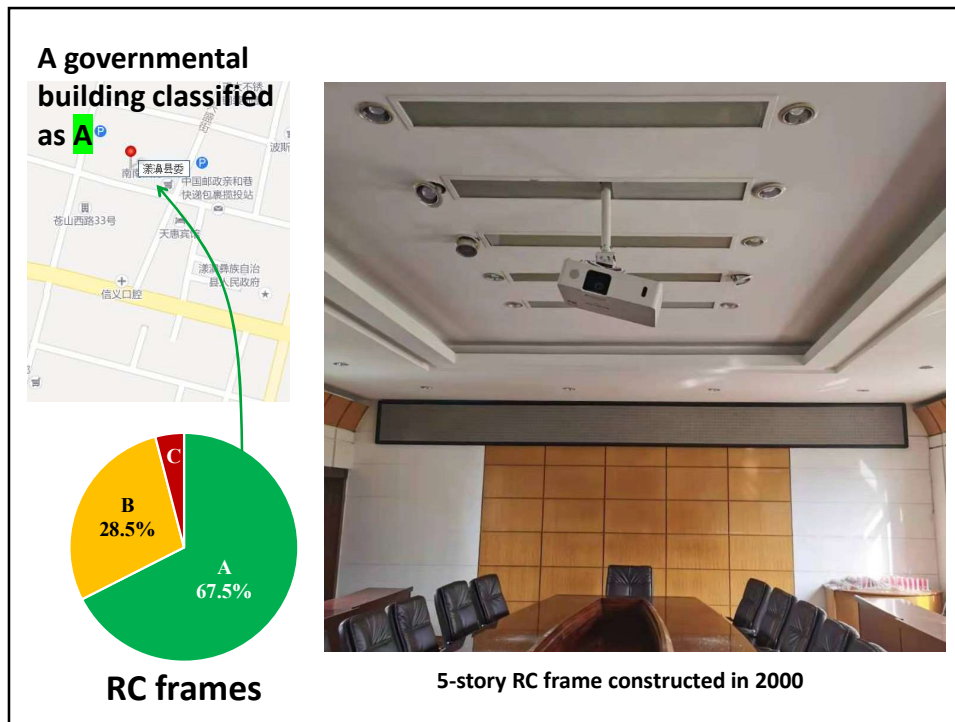


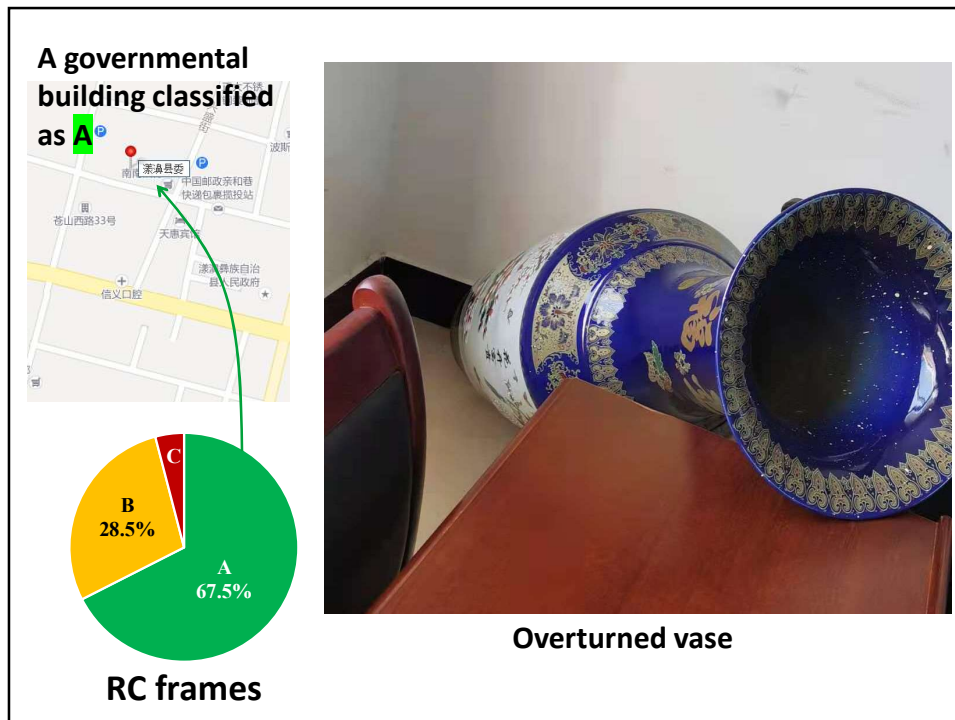












Concluding remarks

- **The strong ground motion in the Yangbi earthquake was not critical to the seismically-designed public buildings.**
- **Structural damage to RC frames was not observed.**
- **Damage to masonry infills imposed the most significant hazard to the quick recovery of RC frame buildings.**

**Thanks for your attentions
and any questions?**



中国地震局工程力学研究所
Institute of Engineering Mechanics, CEA