



WORKING WITH COVID-19 – A NEW ZEALAND PERSPECTIVE

TC-21 Special Session - 6 September 2021

By: Warren Ladbrook
BSE, PE, CPEng, IntPE, CMEngNZ, LEED-AP, PMP, ISAP, BBCP, MSP
New Zealand ASCE Group President, Auxilium Ltd Technical Director, and PhD Student
at University of Auckland



Overview

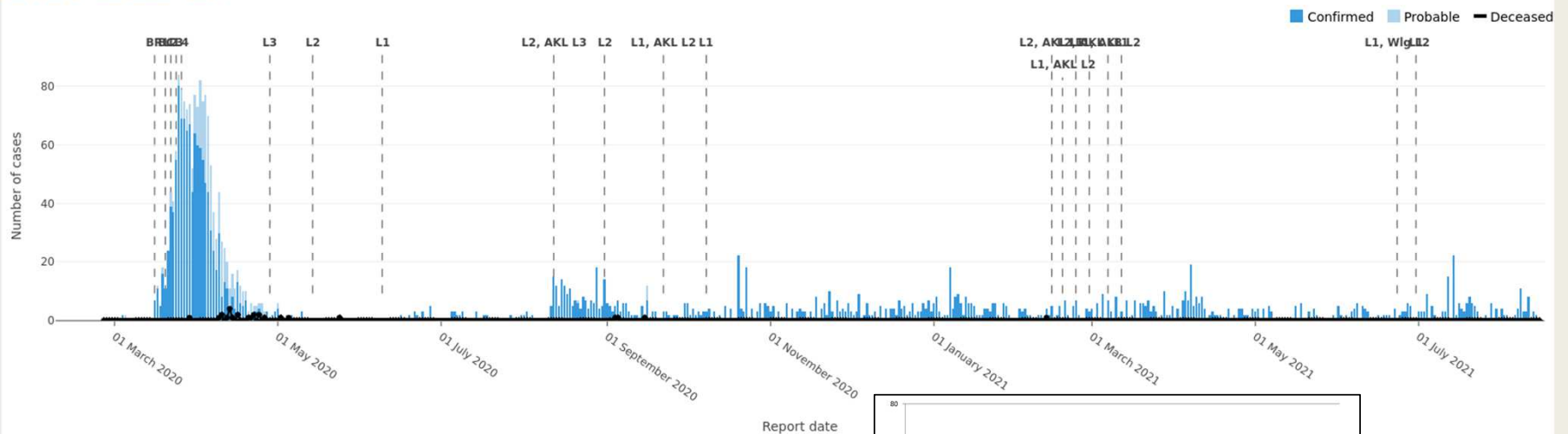
- COVID-19 in New Zealand
- Impacts on New Zealand
- Government Response
- Public Response
- Industry Response

Country	Overall			Urban			Non-Urban		
	Population (million)	Area (km ²)	Average Density (Persons/km ²)	Population (million)	Area (km ²)	Average Density (Persons/km ²)	Population (million)	Area (km ²)	Average Density (Persons/km ²)
Australia	25.69	7,692,000	3.34	20.9	23,100	904.8	4.79	7,668,900	0.62
New Zealand	5.116	268,000	19.1	4.461	8,116	549.7	0.655	259,884	2.5
Japan	125.36	378,000	331.6	114.44	138,448	826.6	10.92	239,552	45.6

COVID-19 in New Zealand



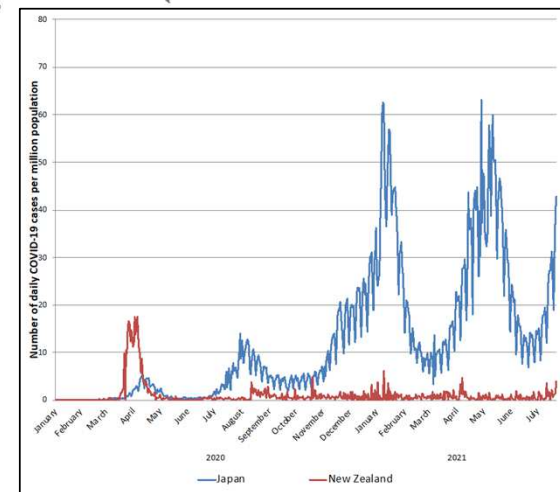
Case curve - total cases - daily



NZ COVID-19 Dashboard

Control dates

- 16 Mar 2020 (BR): Border restrictions, compulsory self-isolation, cruise ships prohibited
- 20 Mar 2020 (BC): Border closed to all but New Zealand citizens and residents
- 22 Mar 2020 (L2): Alert Level 2 - Reduce
- 24 Mar 2020 (L3): Alert Level 3 - Restrict
- 26 Mar 2020 (L4): Alert Level 4 - Lockdown
- 28 Apr 2020 (L3): Alert Level 3 - Restrict
- 14 May 2020 (L2): Alert Level 2 - Reduce
- 9 Jun 2020 (L1): Alert Level 1 - Prepare
- 12 Aug 2020 (L2, AKL L3): Auckland Alert Level 3 - Restrict, rest of New Zealand Alert Level 2 - Reduce
- 31 Aug 2020 (L2): Alert Level 2 - Reduce
- 22 Sep 2020 (L1, AKL L2): Auckland Alert Level 2 - Reduce (24 Sep), rest of New Zealand Alert Level 1 - Prepare (22 Sep)
- 8 Oct 2020 (L1): Alert Level 1 - Prepare
- 14 Feb 2021 (L2, AKL L3): Auckland Alert Level 3 - Restrict, rest of New Zealand Alert Level 2 - Reduce
- 18 Feb 2021 (L1, AKL L2): Auckland Alert Level 2 - Reduce, rest of New Zealand Alert Level 1 - Prepare
- 23 Feb 2021 (L1): Alert Level 1 - Prepare
- 28 Feb 2021 (L2, AKL L3): Auckland Alert Level 3 - Restrict, rest of New Zealand Alert Level 2 - Reduce
- 7 Mar 2021 (L1, AKL L2): Auckland Alert Level 2 - Reduce, rest of New Zealand Alert Level 1 - Prepare
- 12 Mar 2021 (L1): Alert Level 1 - Prepare
- 23 Jun 2021 (L1, WLG L2): Wellington Alert Level 2 - Reduce, rest of New Zealand Alert Level 1 - Prepare
- 30 Jun 2021 (L1): Alert Level 1 - Prepare



E/S/R 15/08/2021

Source: <https://nzcoviddashboard.esr.cri.nz/#/>

Inset Source: <https://blogs.otago.ac.nz/pubhealthexpert/running-into-trouble-covid-19-in-japan-during-the-tokyo-olympics/>



Impacts on New Zealand

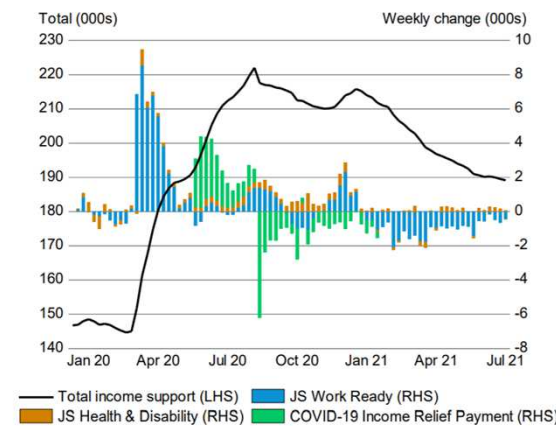
- 2,919 Total cases since pandemic started, 136 required hospitalisation (4.7%)
 - 39 Active in MIQ (1.3%), 2,854 Recovered (97.8%), 26 Deceased (0.9%)

Source: <https://www.health.govt.nz/our-work/diseases-and-conditions/covid-19-novel-coronavirus/covid-19-data-and-statistics/covid-19-case-demographics>

- Tourism stopped
 - Limited Australian visitors in 2021

- Business and employment have been severely impacted

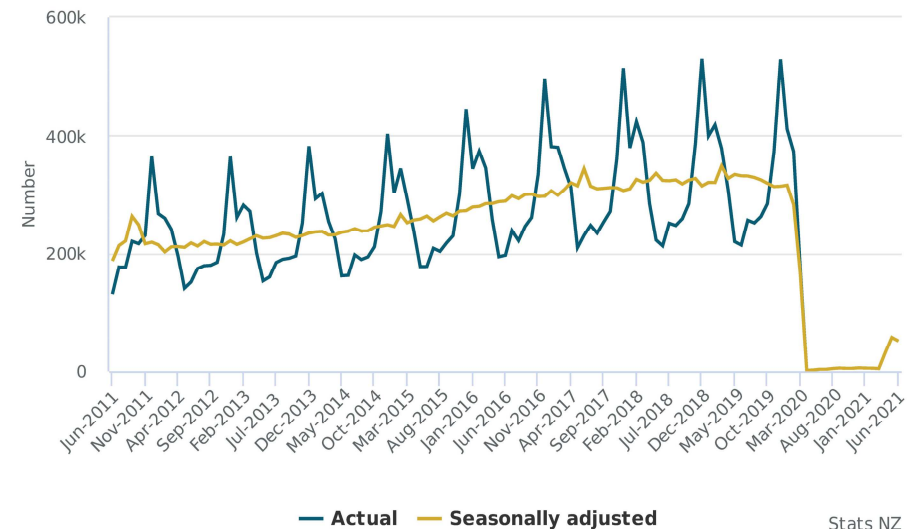
Jobseeker (JS) and Income Support Recipients



Source: MSD

Source: <https://www.treasury.govt.nz/system/files/2021-07/weu-30jul21.pdf>

Overseas visitor arrivals, monthly, June 2011-2021



Stats NZ



Impacts on New Zealand

- Housing crisis (affordability) has worsened
 - *House prices are steadily increasing ... ever faster*
 - *Houses are not being built fast enough*
 - *Rents are steadily increasing*
 - *Wages aren't keeping up*
 - *Reduced housing stock for sale*
 - *Interest rates are driving demand*
 - *Material costs are increasing*
 - *Regulations extend time-to-build*
 - *NZ is becoming unaffordable to live*

NZ wages, rent and house prices 2001-2020

Percentage increases in average wages, median rent and median house prices, 2001-2020. Red shade denotes Labour-led government, blue shade denotes National-led government.

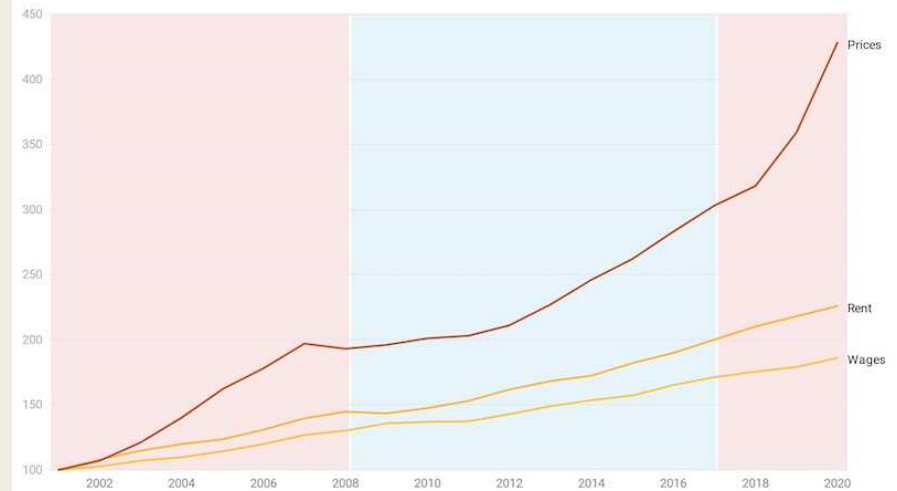
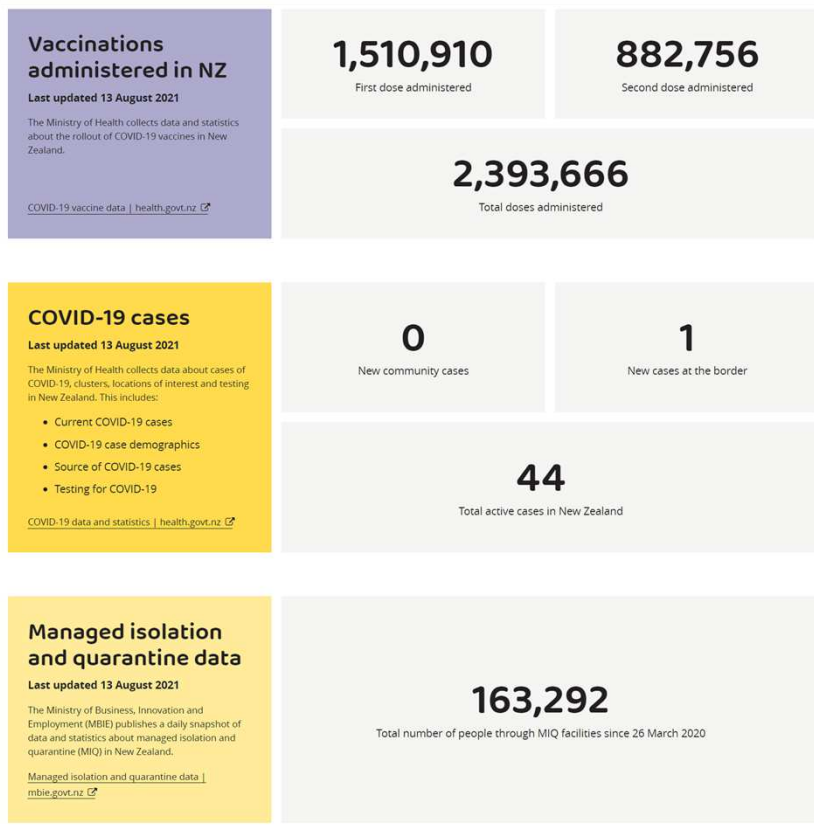


Chart: The Spinoff • Source: MBIE, REINZ, Stats NZ • Created with Datawrapper

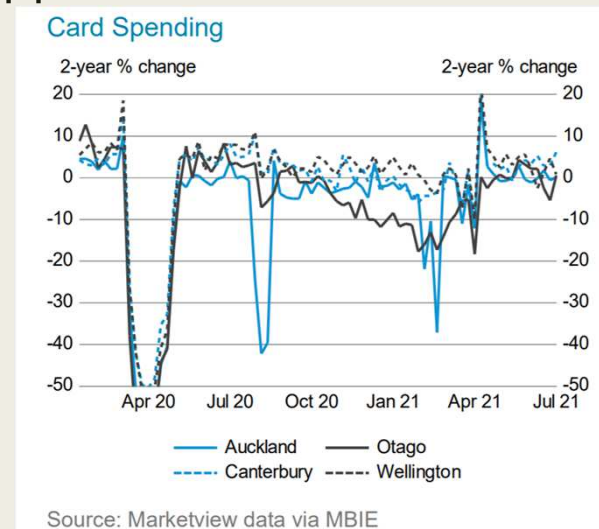
Government Response

- Border controls
- Lockdowns
- Financial subsidies to businesses
- Free training programmes (retraining)
- Tracer app.
- Managed isolation & quarantine
- Vaccination programme

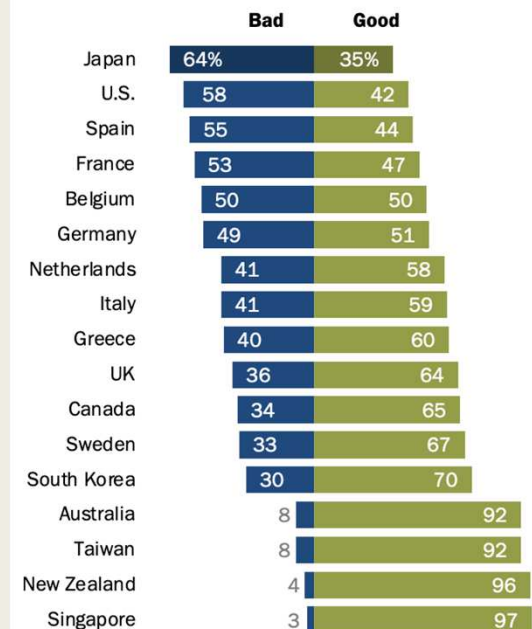


Public Response

- Supportive of government response and have been compliant with lockdowns
- Appreciative of economic support by government
- Complacent use of tracer app
- Apprehensive – reduced spending, domestic travel instead of international
- Slow vaccination uptake



% who say (survey public) has done a ___ job dealing with the coronavirus outbreak



Note: Those who did not answer are not shown.
Source: Spring 2021 Global Attitudes Survey.

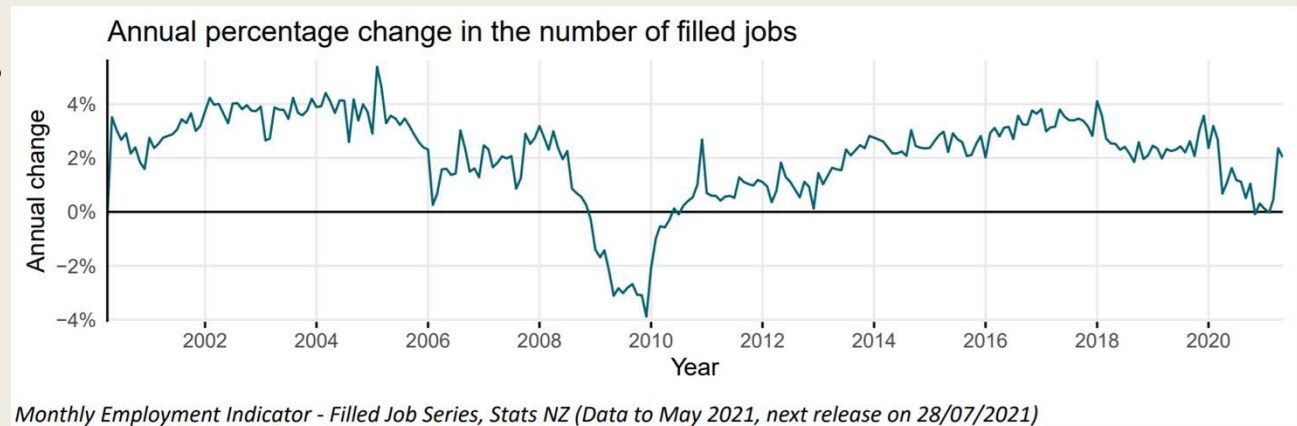
PEW RESEARCH CENTER

Source: <https://www.treasury.govt.nz/system/files/2021-07/weu-30jul21.pdf>



Industry Response

- Embraced the government message to “pull together” and “be kind”
- Developed protocols for conducting business at different alert levels
- Adapted to virtual office environments (some downsizing)
- Supportive of numerous government initiatives to invest in infrastructure and housing
- Employers are ramping up to meet demand
- Cross-discipline skills are becoming more important (to both staff and employers)





THANK-YOU

Questions?

Warren Ladbroke

warren@ladbrook.net

warren@auxilium.co.nz

wlad243@aucklanduni.ac.nz