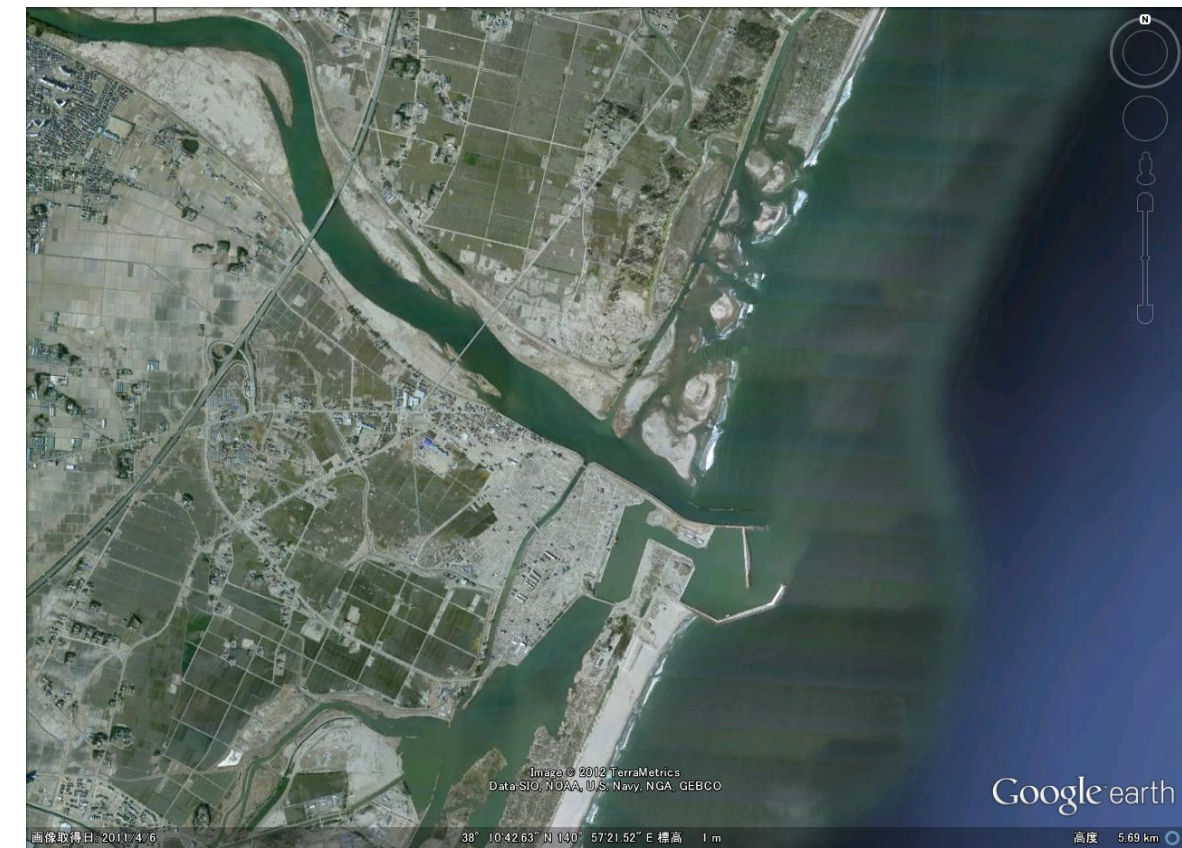




Before tsunami (31 March 2009)



After tsunami (6 April 2011)

YURIAGE area (Natori city)

population (Feb 2011 before Tsunami)	73,576
number of deaths	907
number of missing	129
number of households (Feb 2011)	26,435
number of completely destroyed house	2,676
number of partially destroyed house	750
area of total town	97.76 km ²
tsunami height	5.6~12.3 m
tsunami run-up height	N.A m
inundation area	27.00 km ²

