

The 7th JFES-JSCE-AIJ-WFEO Joint International Symposium on Disaster Risk Management

Program

09:00 Start of the Program

Moderators: Kazumasa ITO (WFEO-CDRM / CTI Engineering Co., Ltd.)

Kenichi TSUKAHARA (WFEO-CDRM/ Member of SCJ Committee
on WFEO/ Kyushu University, Professor)

Opening Remarks by Yumio ISHII (Past President of JSCE, Member of SCJ
Committee on WFEO, Vice President of WFEO and Chair of WFEO-CDRM)

09:10 Session Part I

*Recent Developments of Runoff Analysis and Disaster Reduction against Guerrilla Rainfall
and Line Shaped Rain Bands*

Tadashi YAMADA (JSCE/ Chuo University, Professor)

*Compound Strategy Forward to Compound Disaster Mitigation: Lessons from Hsiaolin
Village, Typhoon Morakot 2009*

Wen-Chi LAI (Invited Overseas Speaker/ Taiwan National Cheng-Kung University,
Researcher)

*Critical Engineering Needs toward Resilient Society: Collapse Quantification and Prompt
Condition Assessment*

Masayoshi NAKASHIMA (AIJ/ Kyoto University, Professor)

Actual Situation and its Problems of Reconstruction Planning

Michio UBAURA (AIJ/ Tohoku University, Associate Professor)

10:40-10:45 Break

10:45 Session Part II

*Transboundary Disaster Risk Management: Coping with large-scale natural hazards with
regional impact*

Ali CHAVOSHIAN (Invited Overseas Speaker / Iran University of Science and
Technology in Iran, Assistant Professor)

*Estimation of Water Disaster Damages after Climate Change and An Adaptation Concept in
Japan*

So KAZAMA (JSCE/ Tohoku
University, Professor)

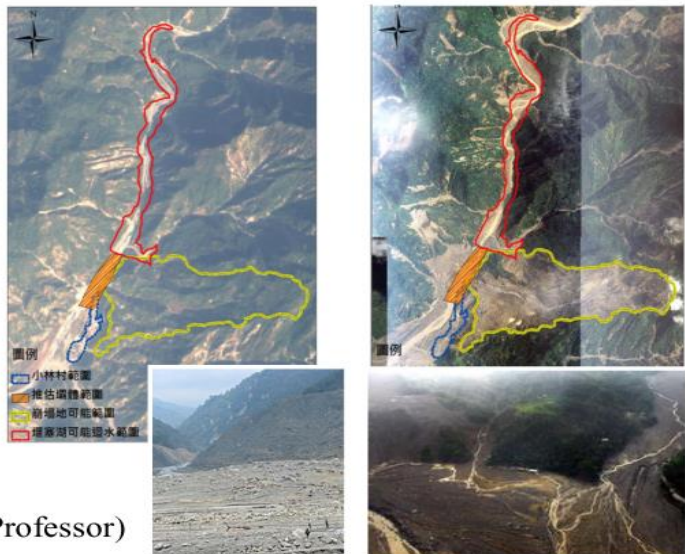
*Outline of DR²AD Model (Disaster Risk
Reduction investment Accounts for
Development Model)*

Kimio TAKEYA (Japan International
Cooperation
Agency, Visiting
Senior Advisor)

*Shifting Framework from Disaster
Management to Disaster Risk
Management: Features in the Philippine
D.R.R.M. Act of 2010 and its I.R.R.*

Benito M. Pacheco

(University of the Philippines Diliman, Professor)



11:55 Closing Remarks

Closing Remarks by Toshimistu KOMATSU (WFEO-CDRM/ Member of SCJ
Committee on WFEO/ Kyushu University, Professor Emeritus)

12:00 End of the Program