

Citizens are our customers

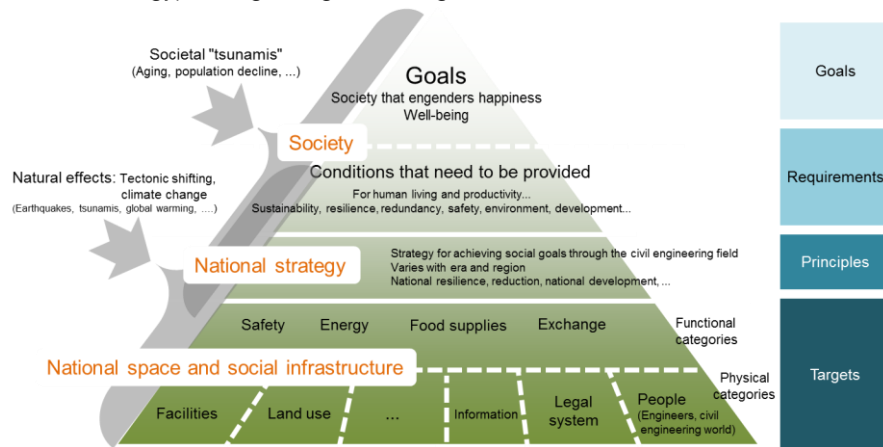
JSCE2015 states that *citizens* are our *customers* in a major redefinition from JSCE 2010, which stated that members were our customers. Now, as a public interest incorporated association, our objective is to resolve society's problems together with the various social sectors.

JSCE2015 outlines the expectation for JSCE members to act as bridges or "interpreters" between citizens and civil engineering (CE) as well as to be "CE practitioners."

JSCE2015 calls for JSCE to create opportunities at which JSCE members provide technical services to the customer (citizens), develop social services, and improve their service capability.

Civil Engineering Framework

JSCE2015 aims for a society in which people find happiness as well as economic fulfillment and outlines the CE framework for a society capable of fulfilling such requirements. The CE framework systematizes the approach for achieving the vision set by CE (national strategy) through tangible/intangible infrastructure assets.



The JSCE Centennial Declaration

Along with **JSCE2015**, JSCE developed "The JSCE Centennial Declaration – Transcending the Boundaries of Civil Engineering to Lay the Foundation for Sustainable Society," a declaration that: Is based on the experiences of the CE world; proposes the building of a society capable of resolving many challenges; is sustainable; provides the next generation aspirations and hope; and defines the ideal position/role of the civil engineer.



JSCE 2015 Transcending Boundaries and Aiming to Improve the Quality of Life of Citizens

JSCE2015 – JSCE Action Plan

JSCE2015 is the fourth installment of the JSCE20xx-series JSCE Action Plan, which is developed once every five years, and follows the JSCE2000 (1998), JSCE2005 (2003), and JSCE2010 (2008) plans.

JSCE2015 was developed on the basis of a broad array of input, from interviews and meetings with outside experts, opinions from all JSCE divisions and committees, and public comments solicited over the Internet.

JSCE2015 covers the five-year period of FY 2015 to 2019.

JSCE2015 positions the "Three Missions and Nine Functions to Have," declared in JSCE2010, as the ongoing action framework to achieve the purpose stipulated in Article 3^{*1} of the Constitution and proposes: **Key mid-term targets** for the next 20 to 30 years based on today's society and infrastructure; and the **key challenges** that need to be prioritized now for the five-year period to resolve today's societal problems and to achieve the key mid-term targets.

JSCE2015 may be downloaded from the JSCE website (<http://www.jsce.or.jp/>).

^{*1} "JSCE shall contribute to the advancement of scientific culture and the development of society by promoting the field of civil engineering, developing civil engineering activities, and improving civil engineering skills."

Three Missions and Nine Functions

JSCE2015 restates the “JSCE’s Three Missions and Nine Functions to Have” from JSCE2010 to contribute to the advancement of science and societal development by promoting the academic fields of civil engineering, developing civil engineering projects, and advancing the professional development of civil engineers.

JSCE Missions	Functions Needed by the JSCE
1. Contribution to advancement of science and technology	a) Up-to-dateness and integration of science and technology b) Application of science and technology to various enterprises c) Accumulation, transfer and exchange of technology (Internationalization of engineering standards)
2. Responsibility and activities toward Japanese and international society	d) Unbiased provision of professional knowledge and contribution to society through engineering support e) International collaboration and contribution f) Information gathering, analysis, and dissemination
3. Professional development of engineers and greater member satisfaction	g) Support for engineers (Greater engineering capability and sharper sense of ethical standards, etc.) h) Expanded opportunities for acquiring information i) Adjusting and improving the efficiency of Society operations

Contribution to advancement of science and technology: The objective is for JSCE to attain social recognition through the pursuit of progress/development in the existing academic/engineering structure while completely reorganizing into a cohesive organization.

Responsibility and activities toward Japanese and international society: The objective is to improve customer (citizen) satisfaction and for society to recognize the indispensability of JSCE as a partner due to its contributions through direct actions that serve both Japanese and international society.

Professional development of engineers and greater member satisfaction: The objective is to advance the professional development of civil engineers (JSCE members included) through support activities for civil engineers and members, while also achieving improved membership satisfaction.

Key Mid-term Targets

JSCE2015 establishes the **key mid-term targets** for JSCE for the next 20 to 30 years. Targets are based on the vision for the society of the future as designated in the **JSCE Centennial Declaration**, and four viewpoints: safety, the environment, vitality, and living.

- **Proposal for reconstructing a sustainable nation, enabling safe and secure living.**
- **Proposal of national land development and management plans by which each nation can stably develop.**
- **Unbiased promotion of professional knowledge and opinions.**
- **Promoting the recognition of and fostering social infrastructure engineers.**

JSCE2015 Key Challenges

JSCE2015 establishes key challenges for the five-year period that require solutions in the near future and that must be prioritized now to achieve the key mid-term targets.

- **Build tangible/intangible infrastructure for earthquake disaster reconstruction and disaster prevention and mitigation**
We will build tangible and intangible infrastructure to achieve a resilient and sustainable society in which citizens are safeguarded and secure from large-scale disasters.
- **Concentrate CE knowledge to handle the accident at the Fukushima No. 1 Nuclear Power Plant**
We will tackle the dispersion of radioactive pollutants and contaminated water, as well as that of the several-decades process of decommissioning the reactor. We will also engage in the recovery of the regions affected by the nuclear accident.
- **Maintain/improve/add new features to infrastructure functionality and build systems to reduce the cost burden on the next generation**
We will develop strategic infrastructure maintenance, management and renewal methods for protecting citizens and reducing the cost burden on citizens through sustainable infrastructure operation before large-scale deterioration becomes a reality.
- **Countermeasures to global challenges**
We will fulfill our responsibilities to the future and global citizenry by working with overseas bodies to take on the challenges on resources, energy, food supplies, climate change, and biodiversity.
- **Address space development projects in a compressed timeframe of a large-scale event**
We will drive sustainable urban management and reconstruction of urban structure, taking advantage of the momentum from the 2020 Tokyo Olympic and Paralympic Games.
- **Foster and employ the next generation of engineers**
We will promote diversity in the CE workforce and in the way engineers work and also take the initiative to foster and employ the next generation of engineers capable of transcending traditional boundaries.
- **Promote international technology value transfer**
We will engage in initiatives to globally distribute the value of tangible/intangible technologies that have been unified and integrated by Japan’s civil engineers so that adopting nations and regions will be able to enjoy wealth both today and in the future.
- **Build and operate an information dissemination/collection function**
We will build a scheme for precisely understanding social infrastructure needs and for disseminating information based on new opportunities born from internal organic JSCE unity and output from new studies.
- **Collaborate with other institutions and fields**
We will collaborate with non-JSCE institutions and sectors in addition to internal JSCE initiatives for transcending traditional boundaries.
- **Achieve internal organic JSCE unity and evaluate the activities**
We will seek to transcend traditional JSCE engineering fields/boundaries and empower the local chapters, which are closer to the customer, to engage the citizens from their standpoint.