

Palu Earthquake Strong Motion Waveform by Observation System Developed by Japan



Palu Earthquake and Palu observatory

[M 7.5 - 78km N of Palu, Indonesia](#)



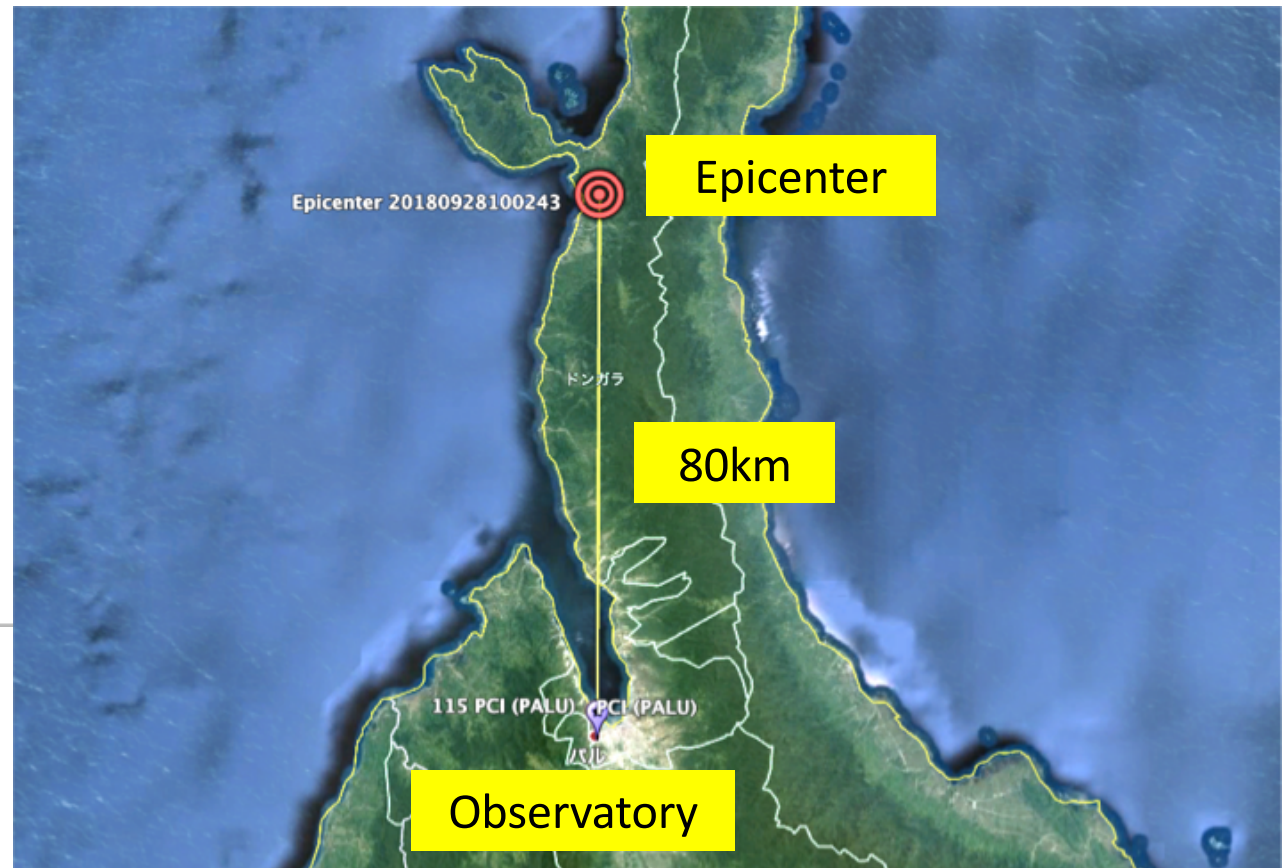
IX DYFI?
IX ShakeMap
YELLOW PAGER



Time 2018-09-28 10:02:43 (UTC)
Location 0.178°S 119.840°E
Depth 10.0 km

Observatory: PCI-PALU
0.90554S, 119.83666E

80km from the Epi-center

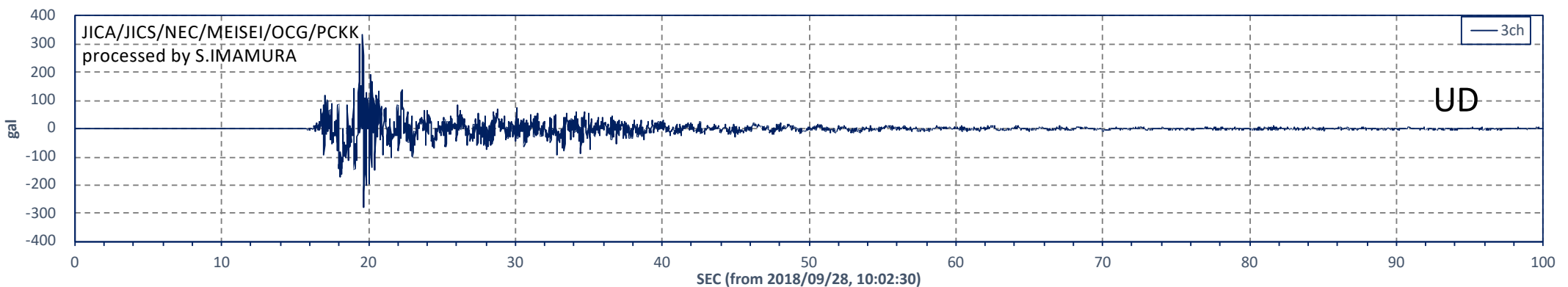
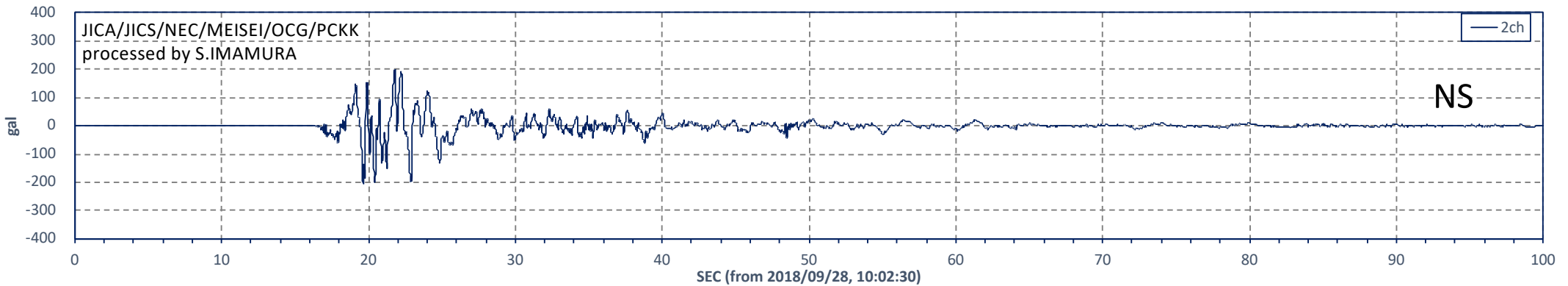
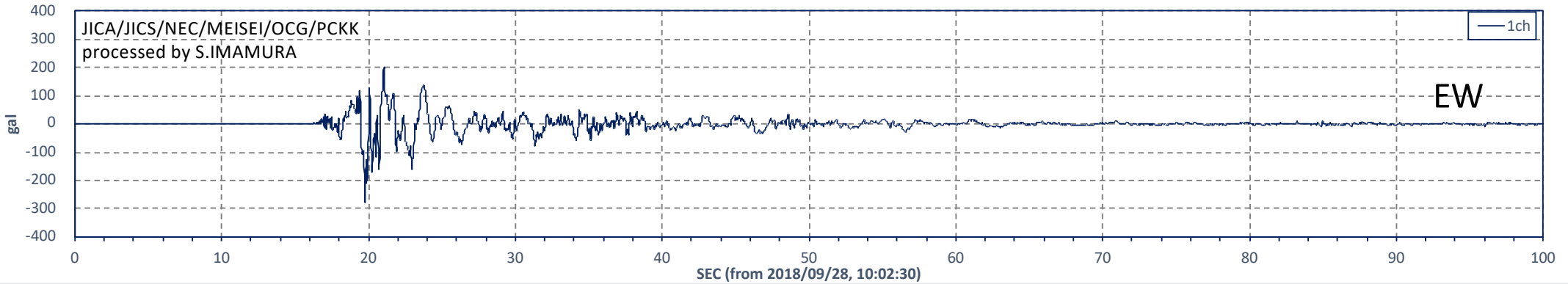


Observed waveform data

- Sensor: Strong motion accelerometer
- AD resolution: 24bit
- Measurement range: ± 3000 gal
- Sensitivity:
 - $3000\text{gal} / 2^{23}\text{bit gal/digit} = 0.0003576278$ gal/digit
- Sampling rate: 100 s/s
- Component: EW, NS, UD
- Recording Period: 2018/09/28/10:02:30 to 10:09:29.99

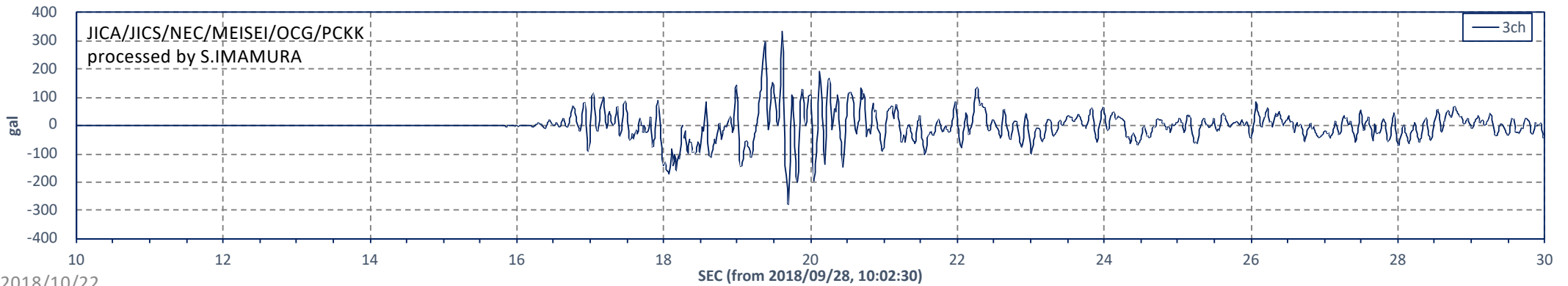
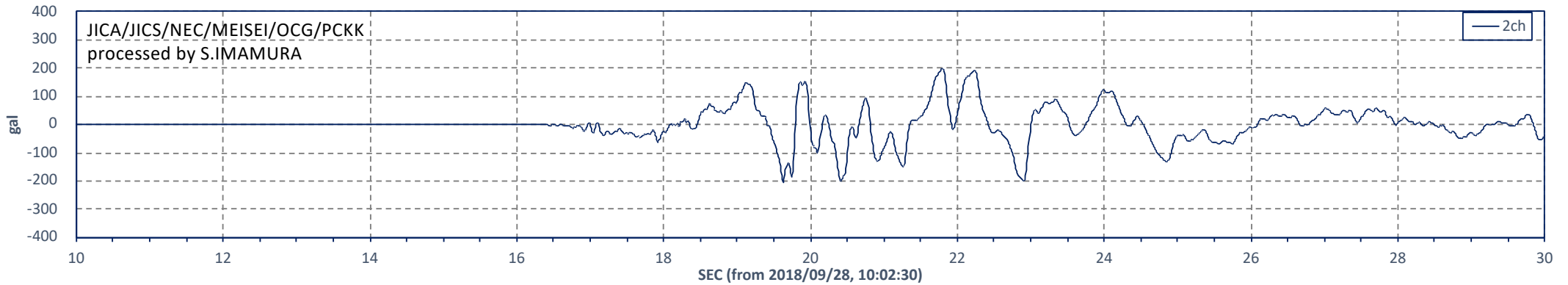
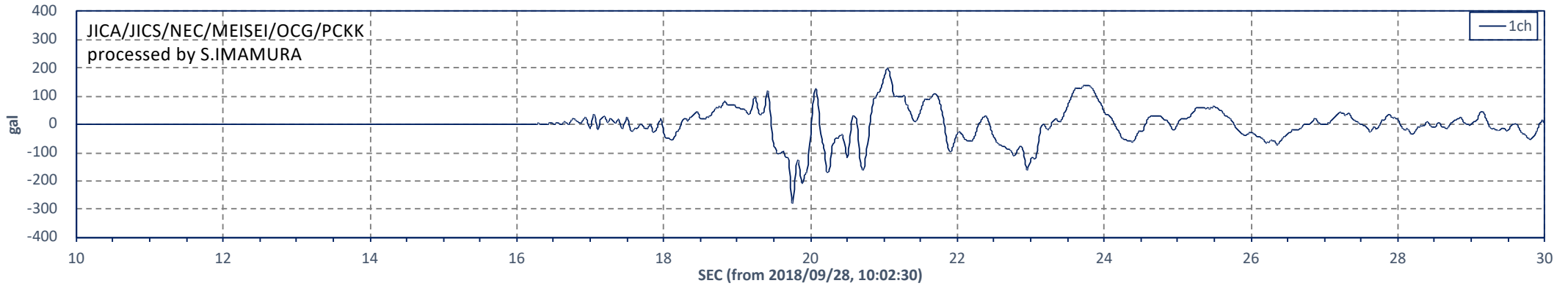


Acceleration waveform from 2018/09/28/10:02:30 to 10:04:10

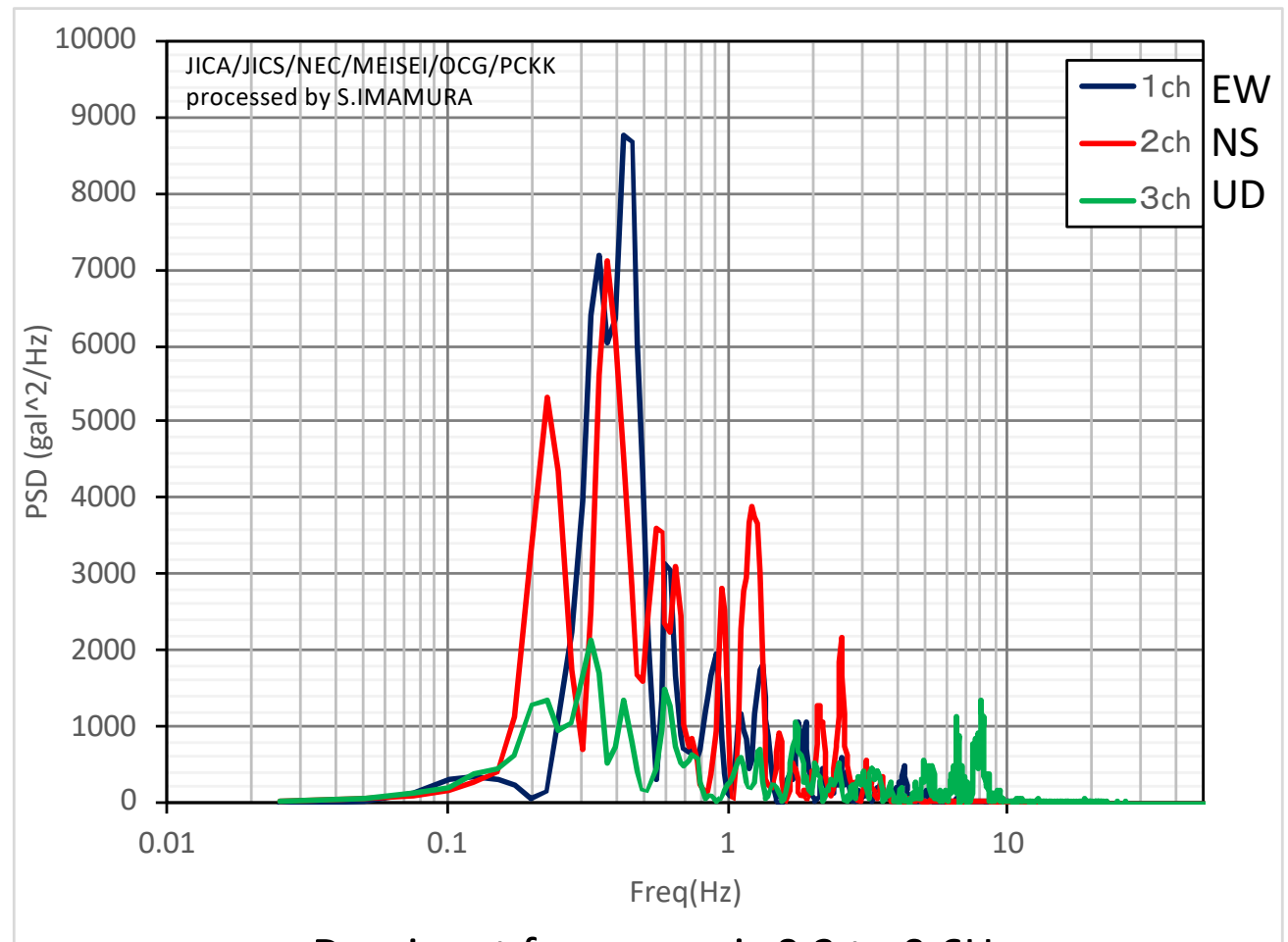
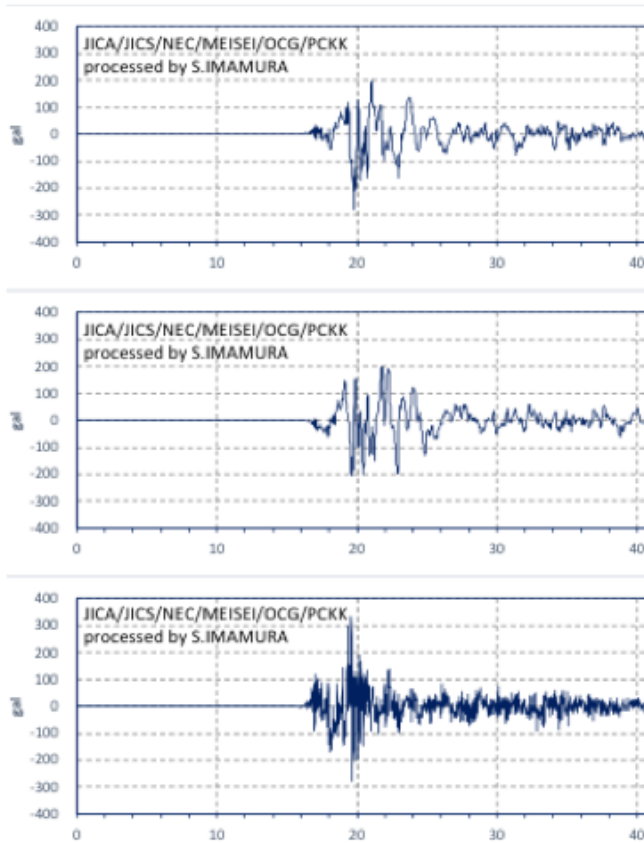




Acceleration waveform (zoom up around main shock)



Preliminary study: power spectrum (first 40 seconds)



Dominant frequency is 0.2 to 0.6Hz

Preliminary study : Seismic Intensity

- JMA Instrumental Seismic Intensity:
 - 5.56 , Class 6- (six minus)
- PGA & MMI
 - EW: 281gal VII, NS: 203gal VII, UD: 335gal VIII
 - Horizontal vector: 333gal VIII
 - 3 component vector: 400gal VIII

