



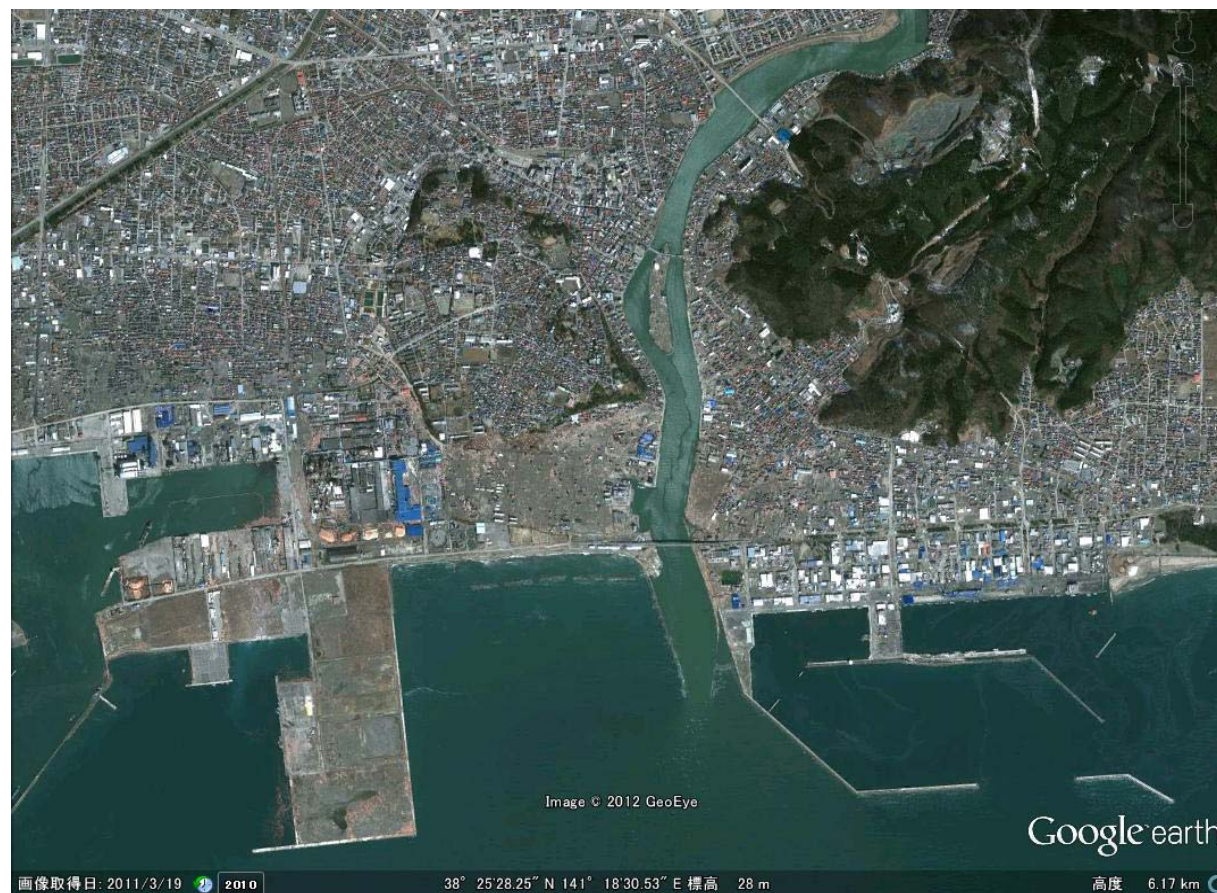
Ogatsu-cho



国土地理院



Before tsunami (25 June 2010)



After tsunami (19 March 2011)

ISHINOMAKI-city

population (Feb 2011 before Tsunami)	160,336
number of deaths	3,025
number of missing	2,770
number of households (Feb 2011)	60,525
number of completely destroyed house	28,000
number of partially destroyed house	under investigation
area of total town	556 km ²
tsunami height (Ishinomaki Port)	3.3~5.0 m
tsunami height (Ogatsu-cho)	15.5 m
tsunami run-up height (Ogatsu-cho)	16.7 m
inundation area	73 km ²

